

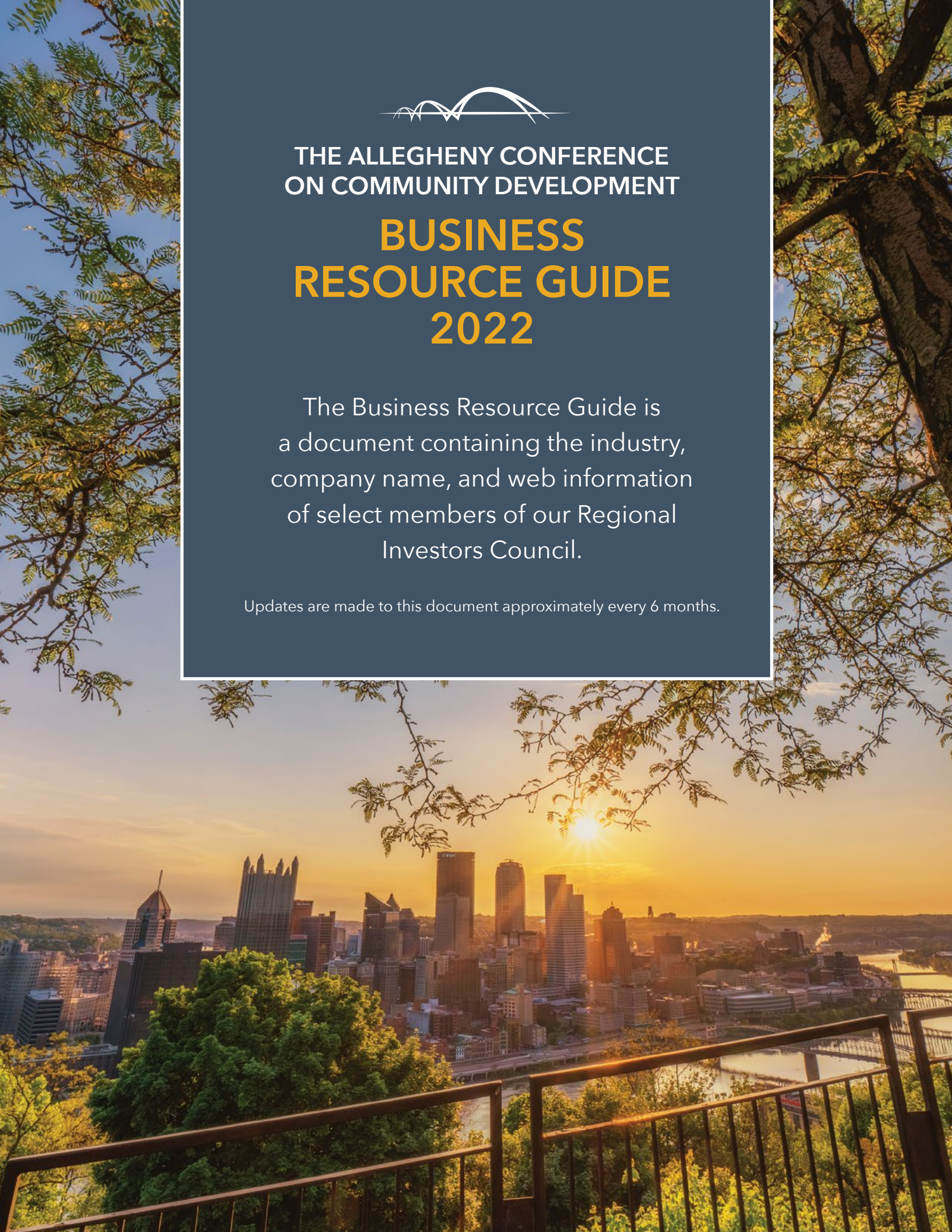


THE ALLEGHENY CONFERENCE  
ON COMMUNITY DEVELOPMENT

# BUSINESS RESOURCE GUIDE 2022

The Business Resource Guide is a document containing the industry, company name, and web information of select members of our Regional Investors Council.

Updates are made to this document approximately every 6 months.



# ALLEGHENY CONFERENCE ON COMMUNITY DEVELOPMENT 2022 BUSINESS RESOURCE GUIDE

## **Accenture**

Business Services  
[www.accenture.com](http://www.accenture.com)

## **AHRCO**

Business Services  
[www.ahrco.com](http://www.ahrco.com)

## **Alcoa Corporation**

Metal/Metal Products  
[www.alcoa.com](http://www.alcoa.com)

## **AmeriHealth Caritas**

Insurance  
[www.amerhealthcaritas.com](http://www.amerhealthcaritas.com)

## **Aquatech**

Water Technology & Services  
[www.aquatech.com](http://www.aquatech.com)

## **ATI**

Aerospace & Defense Materials  
[www.atimetals.com](http://www.atimetals.com)

## **Babst, Calland, Clements and Zomnir, P.C.**

Legal Services  
[www.babstcalland.com](http://www.babstcalland.com)

## **Bank of America Merrill Lynch**

Financial Institutions/Banking  
[www.bofa.com](http://www.bofa.com)

## **BCG**

Business Services  
[www.bcg.com](http://www.bcg.com)

## **BNY Mellon**

Financial Services  
[www.bnymellon.com](http://www.bnymellon.com)

## **Buchanan Ingersoll & Rooney PC**

Legal Services  
[www.bipc.com](http://www.bipc.com)

## **Calgon Carbon Corporation**

Environmental Services  
[www.calgoncarbon.com](http://www.calgoncarbon.com)

## **Carmeuse Americas**

Mining, Engineering, & Materials Handling  
[www.carmeuse.com](http://www.carmeuse.com)

## **Carnegie Museums of Pittsburgh**

Arts, Entertainment, Sports  
[www.carnegiemuseums.org](http://www.carnegiemuseums.org)

## **Catalyst Connection**

Economic and Workforce Development - Small & Medium Manufacturers  
[www.catalystconnection.org](http://www.catalystconnection.org)

## **CGI Technologies and Solutions Inc**

IT & Business Consulting Services  
[www.cgi.com](http://www.cgi.com)

## **Chatham University**

Education  
[www.chatham.edu](http://www.chatham.edu)

## **Civil & Environmental Consultants, Inc.**

Engineering & Construction Services  
[www.cecinc.com](http://www.cecinc.com)

## **Coherent Corp.**

Electric Power Industry  
[www.coherent.com](http://www.coherent.com)

## **Columbia Gas of Pennsylvania, Inc.**

Natural Gas Utility  
[www.columbiagaspa.com](http://www.columbiagaspa.com)

## **Comcast**

Business Services  
[www.xfinity.com](http://www.xfinity.com)

## **Community College of Allegheny County**

Education  
[www.ccac.edu](http://www.ccac.edu)

## **Crown Castle**

Shared Communications Infrastructure Provider  
[www.crowncastle.com](http://www.crowncastle.com)

## **Deloitte LLP**

Business Services  
[www.deloitte.com](http://www.deloitte.com)

## **Dentons Cohen & Grigsby, P.C.**

Legal Services  
[www.cohenlaw.com](http://www.cohenlaw.com)

## **DICK'S Sporting Goods**

Retail  
[investors.dicks.com/about-us/default.aspx](http://investors.dicks.com/about-us/default.aspx)

## **Duolingo**

Software Publisher  
[www.duolingo.com](http://www.duolingo.com)

## **Duquesne Light Company**

Electric Power Industry  
[www.duquesnelight.com](http://www.duquesnelight.com)

## **Duquesne University**

Education  
[www.duq.edu](http://www.duq.edu)

## **Eat'n Park Hospitality Group, Inc.**

Food, Beverage, & Tobacco  
[www.enphospitality.com](http://www.enphospitality.com)

## **Eaton**

Intelligent Power Management  
[www.eaton.com](http://www.eaton.com)

## **Ellwood Group, Inc.**

Metal/Metal Products  
[www.ellwoodgroup.com](http://www.ellwoodgroup.com)

## **EQT Corporation**

Natural Gas Industry  
[www.eqt.com](http://www.eqt.com)

## **Ernst & Young, LLP**

Business Services  
[www.ey.com](http://www.ey.com)

## **Evoqua Water Technologies**

Water  
[www.evoqua.com](http://www.evoqua.com)

## **Federal Home Loan Bank of Pittsburgh**

Financial Institutions/Banking  
[www.fhfb-pgh.com](http://www.fhfb-pgh.com)

## **First Commonwealth Bank**

Financial Institutions/Banking  
[www.fcbanking.com](http://www.fcbanking.com)

## **FirstEnergy Corporation**

Electric Power Industry  
[www.firstenergycorp.com](http://www.firstenergycorp.com)



# ALLEGHENY CONFERENCE ON COMMUNITY DEVELOPMENT 2022 BUSINESS RESOURCE GUIDE

**Fortyx80**

Non-profit  
[www.fortyx80.org](http://www.fortyx80.org)

**Fragasso Financial Advisors**

Financial Institutions/Banking  
[www.fragassoadvisors.com](http://www.fragassoadvisors.com)

**Gateway Financial Group, Inc.**

Financial Institutions/Banking  
[www.gatewayfinancial.biz](http://www.gatewayfinancial.biz)

**Gateway Health Plan**

Insurance  
[www.gatewayhealthplan.com](http://www.gatewayhealthplan.com)

**Giant Eagle, Inc.**

Food, Fuel and Pharmacy Retailer  
[www.gianteagle.com](http://www.gianteagle.com)  
[www.getgocafe.com](http://www.getgocafe.com)

**Goodwill of Southwestern Pennsylvania**

Workforce Development & Human Services  
[www.goodwillswpa.org](http://www.goodwillswpa.org)

**Google Pittsburgh**

Business Services  
[www.google.com/corporate/pittsburgh/](http://www.google.com/corporate/pittsburgh/)

**HarbisonWalker International**

Business Services  
[www.thinkhwi.com](http://www.thinkhwi.com)

**Heritage Valley Health System**

Healthcare Services  
[www.heritagevalley.org](http://www.heritagevalley.org)

**Highmark Health**

Healthcare Services  
[www.highmarkhealth.com](http://www.highmarkhealth.com)

**Howard Hanna Real Estate Services**

Real Estate Services  
[www.howardhanna.com](http://www.howardhanna.com)

**Independence Excavating, Inc.**

Engineering & Construction Services  
[www.indexc.com](http://www.indexc.com)

**Jewish Healthcare Foundation**

Foundations  
[www.jhf.org](http://www.jhf.org)

**Jones Day (Pittsburgh Office)**

Legal Services  
[www.jonesday.com](http://www.jonesday.com)

**JPMorgan Chase & Co.**

Financial Institutions/Banking  
[www.jpmorganchase.com](http://www.jpmorganchase.com)

**K&L Gates LLP**

Legal Services  
[www.klgates.com](http://www.klgates.com)

**Kennametal Inc.**

Industrial Technology Company  
[www.kennametal.com](http://www.kennametal.com)

**KeyBank**

Financial Institutions/Banking  
[www.key.com](http://www.key.com)

**L. B. Foster Company**

Machinery/Equipment  
[www.lbfoster.com](http://www.lbfoster.com)

**LANXESS Corporation**

Specialty Chemicals  
[www.lanxess.com](http://www.lanxess.com)

**Manchester Bidwell Corporation Education**

[www.manchesterbidwell.org](http://www.manchesterbidwell.org)

**Mascaro Construction Company, L.P.**

Engineering & Construction Services  
[www.mascaroconstruction.com](http://www.mascaroconstruction.com)

**Massaro Construction Group, Inc.**

Engineering & Construction Services  
[www.massarocorporation.com](http://www.massarocorporation.com)

**Matthews International**

Business Services  
[www.matw.com](http://www.matw.com)

**McKinsey & Company**

Business Services  
[www.mckinsey.com](http://www.mckinsey.com)

**Meyer, Unkovic & Scott LLP**

Legal Services  
[www.muslaw.com](http://www.muslaw.com)

**Microsoft Pittsburgh**

Computer Services  
[www.microsoft.com](http://www.microsoft.com)

**Mitsubishi Electric Power Products, Inc.**

Manufacturing, Engineering, and Services  
[www.meppi.com](http://www.meppi.com)

**MSA, The Safety Company**

Machinery/Equipment  
[us.msasafety.com/](http://us.msasafety.com/)

**NOVA Chemicals Corporation**

Chemicals, Plastics, Rubber  
[www.novachem.com](http://www.novachem.com)

**NRG Energy, Inc.**

Energy Services  
[www.nrg.com](http://www.nrg.com)

**Oxford Development Company**

Real Estate Services  
[www.oxforddevelopment.com](http://www.oxforddevelopment.com)

**PA Health & Wellness**

Healthcare Services  
[www.pahealthwellness.com](http://www.pahealthwellness.com)

**Penn State Beaver**

Education  
[www.beaver.psu.edu](http://www.beaver.psu.edu)

**Penn State Greater Allegheny**

Education  
[www.greaterallegheny.psu.edu](http://www.greaterallegheny.psu.edu)

**Penn State New Kensington**

Education  
[www.nk.psu.edu](http://www.nk.psu.edu)

**Pennsylvania American Water**

Water  
[www.amwater.com/paaw](http://www.amwater.com/paaw)

**PITT OHIO**

Transportation  
[www.pittohio.com](http://www.pittohio.com)

# ALLEGHENY CONFERENCE ON COMMUNITY DEVELOPMENT 2022 BUSINESS RESOURCE GUIDE

## **Pittsburgh Community Broadcasting Corporation**

Media  
[www.PittsburghCommunityBroadcasting.org](http://www.PittsburghCommunityBroadcasting.org)

## **PITTSBURGH Magazine**

Media  
[www.pittsburghmagazine.com](http://www.pittsburghmagazine.com)

## **Pittsburgh Penguins**

Arts, Entertainment, Sports  
[www.penguins.nhl.com](http://www.penguins.nhl.com)

## **Pittsburgh Technology Council**

Membership & Trade Associations  
[www.pghtech.org](http://www.pghtech.org)

## **Point Park University**

Education  
[www.pointpark.edu](http://www.pointpark.edu)

## **PPG**

Paints, Coatings and Specialty  
Materials  
[www.ppg.com](http://www.ppg.com)

## **Premier Medical Associates**

Healthcare Services  
[www.PremierMedicalAssociates.com](http://www.PremierMedicalAssociates.com)

## **PwC**

Business Services  
[www.pwc.com/](http://www.pwc.com/)

## **Reed Smith**

Legal Services  
[www.reedsmith.com](http://www.reedsmith.com)

## **Richard King Mellon Foundation**

Foundations  
[www.rkmf.org](http://www.rkmf.org)

## **Robert Bosch LLC**

Machinery/Equipment  
[www.bosch-home.com/us/](http://www.bosch-home.com/us/)

## **Robert Morris University**

Education  
[www.rmu.edu](http://www.rmu.edu)

## **S&B USA**

Development and Construction  
[www.shikunusa.com/us](http://www.shikunusa.com/us)

## **S&T Bank**

Financial Institutions/Banking  
[www.stbank.com](http://www.stbank.com)

## **Sargent Electric Company**

Electrical, Instrumentation, Wireless  
and Teledata Contractor  
[www.sargentelectric.com](http://www.sargentelectric.com)

## **Schneider Downs & Company, Inc.**

Business Services  
[www.schneiderdowns.com](http://www.schneiderdowns.com)

## **Seegrid Corporation**

Transportation  
[www.seegrid.com](http://www.seegrid.com)

## **Shell Chemicals Appalachia**

Natural Gas Industry  
[www.shell.com](http://www.shell.com)

## **The Buhl Foundation**

Foundations  
[www.buhlfoundation.org](http://www.buhlfoundation.org)

## **The Buncher Company**

Commercial Real Estate Services  
[www.buncher.com](http://www.buncher.com)

## **The Huntington National Bank**

Financial Institutions/Banking  
[www.huntington.com](http://www.huntington.com)

## **The PNC Financial Services Group, Inc.**

Financial Institutions/Banking  
[www.pnc.com](http://www.pnc.com)

## **The Reschini Group**

Insurance  
[www.reschini.com](http://www.reschini.com)

## **Thermo Fisher Scientific**

Life Sciences Tools Company  
[www.thermofisher.com](http://www.thermofisher.com)

## **TriState Capital Bank**

Financial Institutions/Banking  
[www.tscbank.com](http://www.tscbank.com)

## **Troutman Pepper Hamilton Sanders LLP**

Legal Services  
[www.troutman.com](http://www.troutman.com)

## **United States Steel Corporation**

Metal/Metal Products  
[www.ussteel.com](http://www.ussteel.com)

## **UPMC**

Insurance and Provider Services  
[www.upmc.com](http://www.upmc.com)

## **Wabtec Corporation**

Machinery/Equipment  
[www.wabtec.com](http://www.wabtec.com)

## **WesBanco Bank**

Financial Institutions/Banking  
[www.wesbanco.com](http://www.wesbanco.com)

## **Wesco International**

Industrial Distribution and Supply  
[www.wesco.com](http://www.wesco.com)

## **WQED Multimedia**

Media  
[www.wqed.org](http://www.wqed.org)

11 STANWIX STREET, 17TH FLOOR | PITTSBURGH, PA 15222-1312

TOLL FREE: 1 (877) 392-1300 | PHONE: (OUTSIDE OF U.S. AND CANADA) +1 (412) 281-1890

EMAIL: [info@allegHENYconference.org](mailto:info@allegHENYconference.org) | [AlleghenyConference.org](http://AlleghenyConference.org)