

# **COVID-19 Data Summary for the Southwestern Pennsylvania Region**

Periods covering January to February

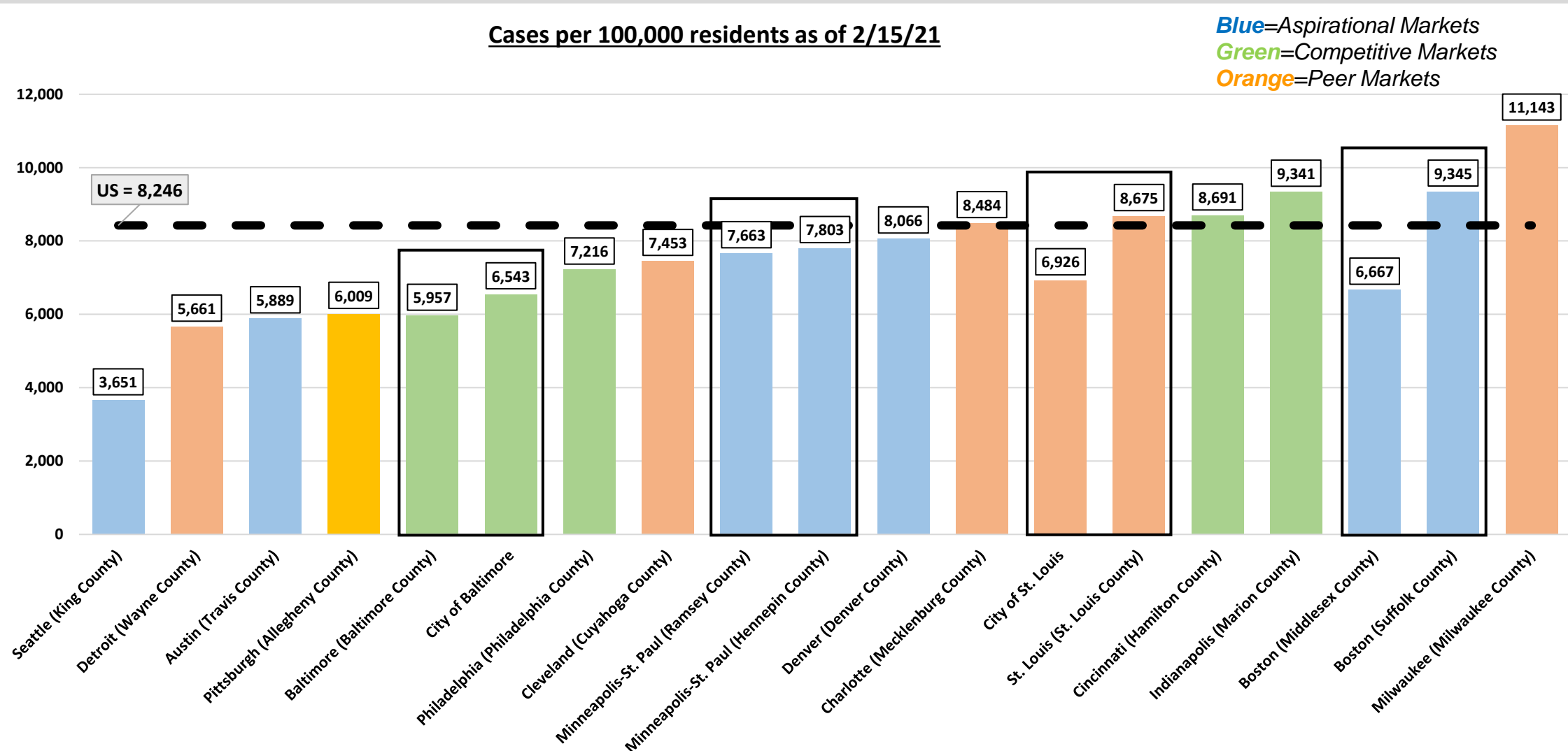
February 17, 2021

# Key Takeaways

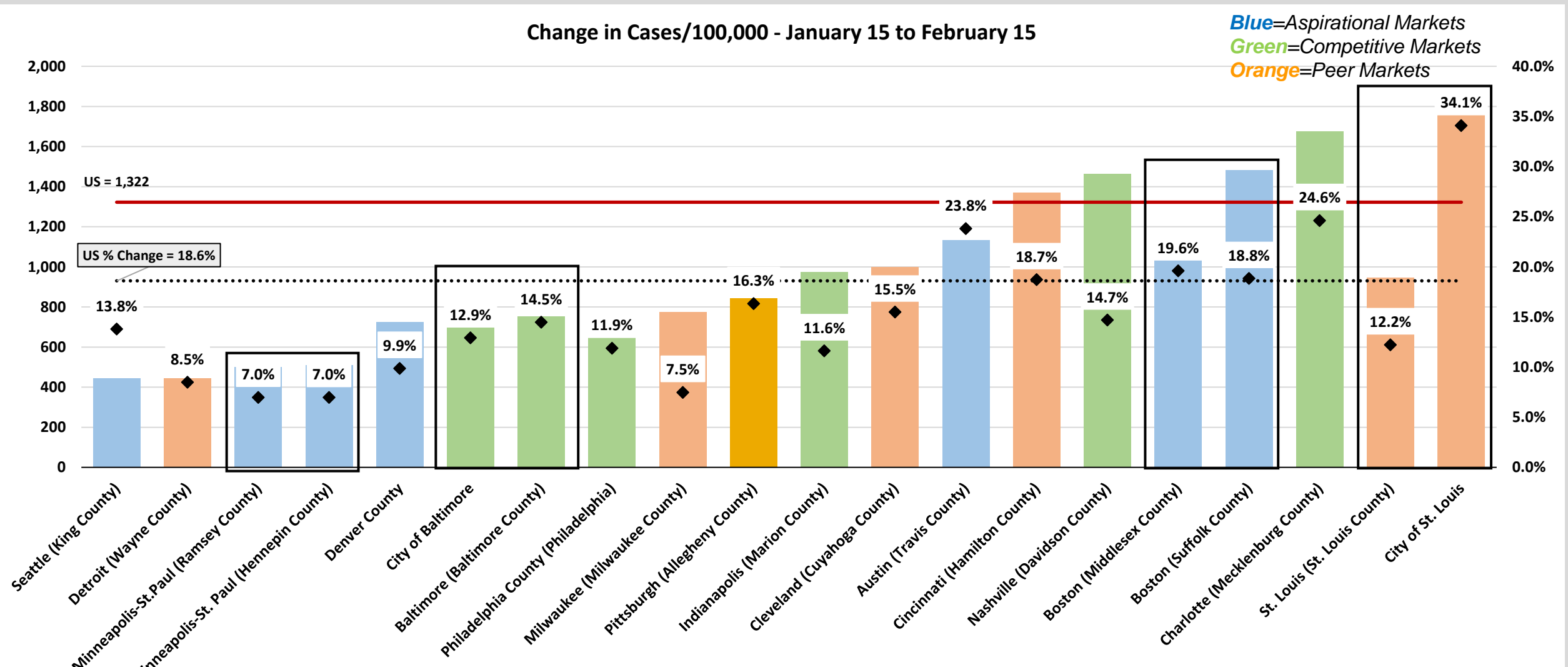
---

- As of Monday, February 15, Allegheny County's rate of COVID-19 cases per 100,000 residents remains below the national rate.
- From January to February, the increase in the number of cases per 100,000 in Allegheny County was lower than the U.S. and eight benchmark regions. However, the percentage increase exceeded ten benchmarks.
- Regionally, the rate of new COVID-19 cases over a 14-day period (2/3 to 2/17) has decreased 24.5%.
- Daily new cases for the region have decreased 34.5% from 2/3 to 2/17.
- In Allegheny County, hospitalizations have increased 4.9% between 2/3 and 2/17, which is lower than the 14-day hospitalization increase of 16.2% reported in the previous analysis released 1/20/21 analyzing the period between 1/6 and 1/20.
- 178,917 vaccines have been administered in the region as of Wednesday, February 17.

Allegheny County still compares favorably to its benchmark regions in terms of COVID-19 infection rates, although Seattle, Detroit and Austin rank lower. In addition, while the county's rate is below the nation, the gap between the two has slowly narrowed in recent months and is now 29%.



On an absolute basis, the increase in the number of cases per 100,000 in Allegheny County from January to February was lower than the U.S. and eight benchmark regions. However, the percentage increase in cases per 100,000 exceeded ten benchmark regions. This represents an improvement from the previous two months, where the percentage increase was greater than all of the benchmark regions.



Source: Johns Hopkins Coronavirus Resource Center, data current as of February 15, 2020

2/17/21

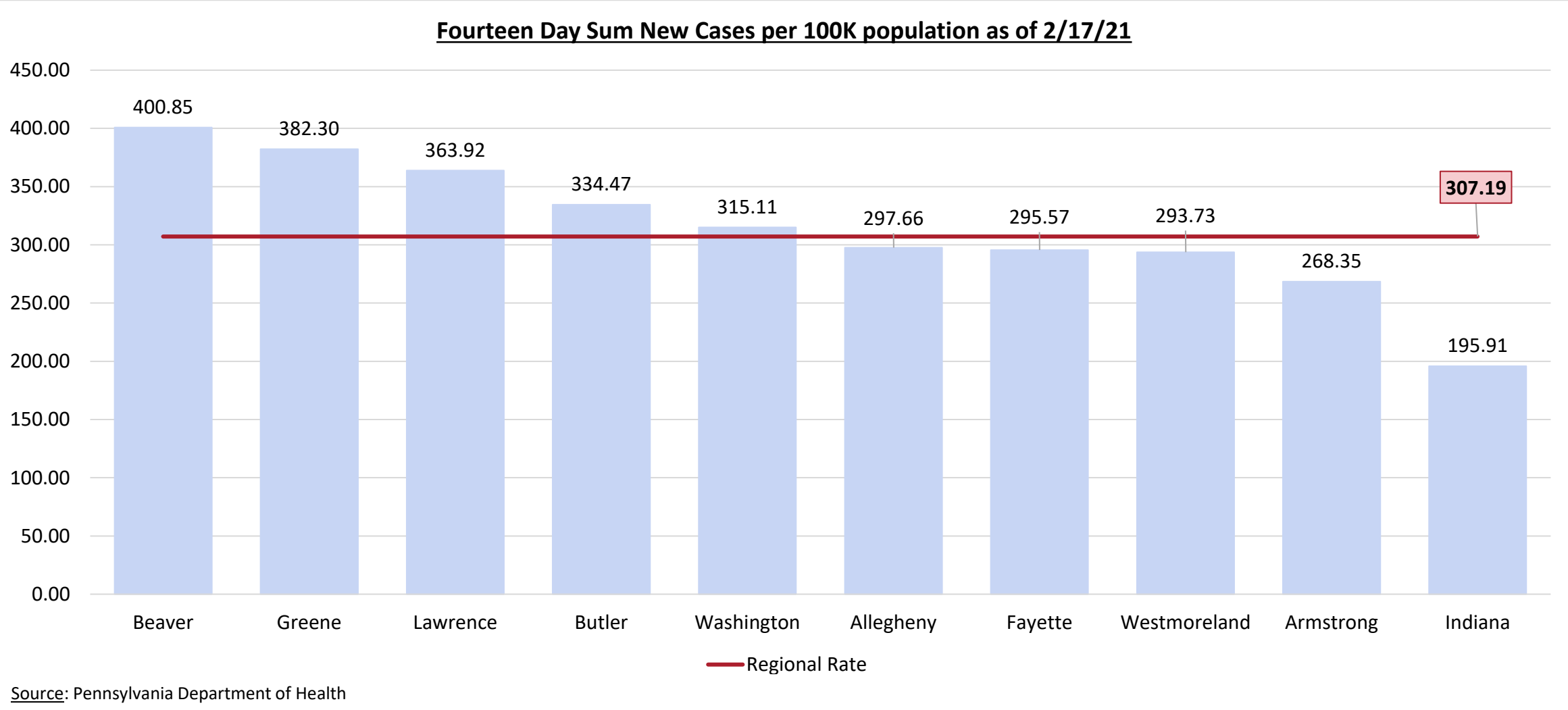
All counties in the region have decreased new cases of COVID-19 per 100,000 in the fourteen-day period between February 3 and February 17. The decrease in the region's rate of change of COVID-19 per 100,000 lags the state (-24.5% to -30.4%).

Fourteen Day Sum New Cases per 100,000 population by Geography by Date

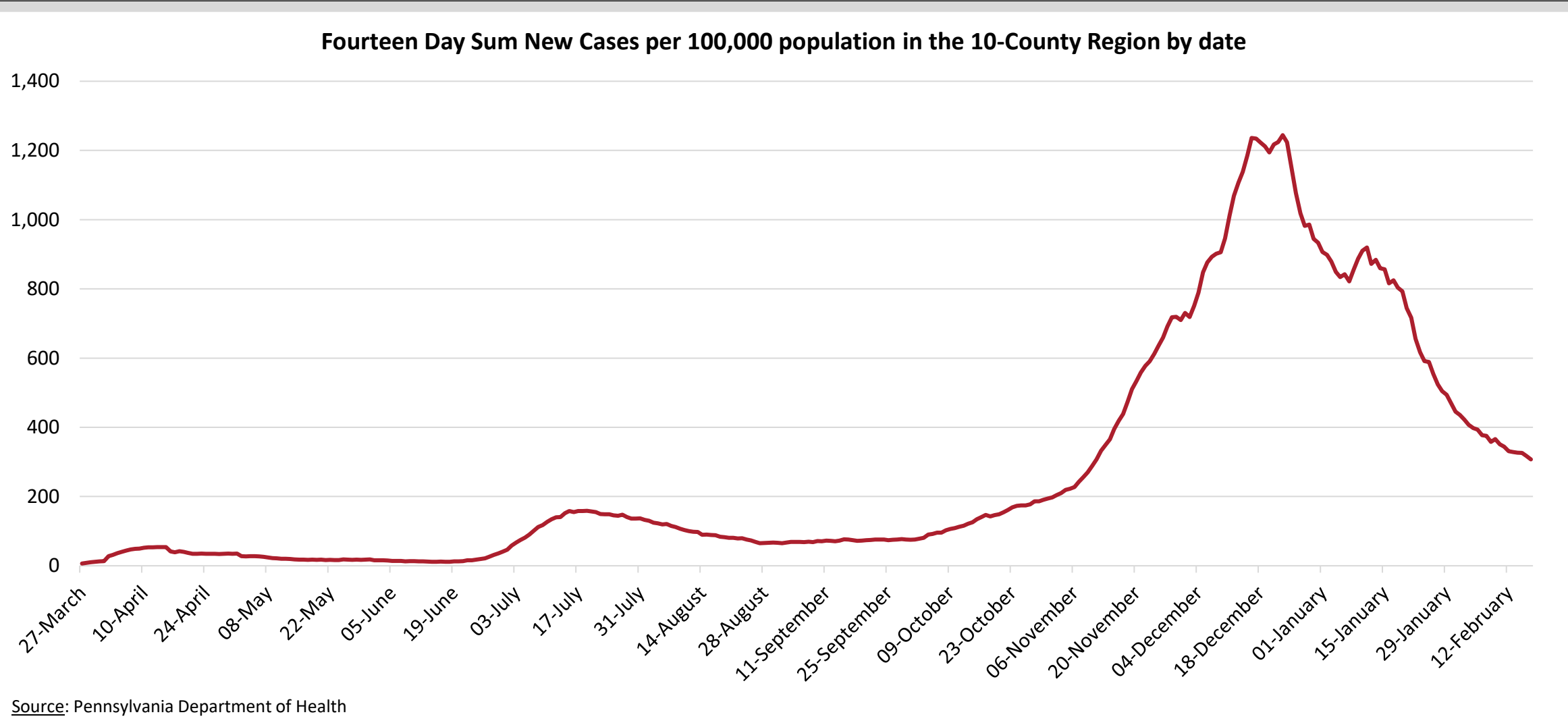
	2/3	2/4	2/5	2/6	2/7	2/8	2/9	2/10	2/11	2/12	2/13	2/14	2/15	2/16	2/17	14 Day Change
<b>Pennsylvania</b>	550.74	532.80	527.72	513.22	519.01	507.83	503.61	484.10	468.01	423.79	415.17	404.11	397.01	381.11	383.34	-30.4%
<b>10-County</b>	407.10	397.53	393.42	377.10	375.61	357.85	365.81	350.99	344.09	330.76	328.48	326.83	326.21	317.38	307.19	-24.5%
<b>Allegheny</b>	374.36	365.22	364.57	348.74	346.62	334.87	344.90	333.72	326.54	317.41	315.77	314.06	315.12	306.88	297.66	-20.5%
<b>Armstrong</b>	402.53	369.36	333.18	351.27	331.67	333.18	301.52	297.00	293.98	295.49	283.43	283.43	281.92	272.87	268.35	-33.3%
<b>Beaver</b>	412.23	426.01	424.22	411.63	410.44	399.05	429.01	408.64	411.63	400.25	407.44	388.27	390.06	396.65	400.85	-2.8%
<b>Butler</b>	513.49	500.63	487.76	475.97	459.89	441.13	437.38	417.55	408.43	375.20	373.59	373.06	366.09	341.43	334.47	-34.9%
<b>Fayette</b>	479.25	463.38	453.55	422.56	431.63	390.81	390.81	375.69	364.35	359.06	341.68	340.92	333.36	317.49	295.57	-38.3%
<b>Greene</b>	533.06	508.83	498.06	481.91	460.37	441.52	465.75	441.52	446.91	395.76	403.83	384.99	387.68	390.37	382.30	-28.3%
<b>Indiana</b>	275.20	256.54	255.38	248.38	251.88	237.89	243.72	234.39	230.89	226.23	214.56	211.07	213.40	204.07	195.91	-28.8%
<b>Lawrence</b>	417.71	425.72	414.27	389.10	391.38	371.93	397.11	393.67	383.37	374.22	384.52	369.64	370.79	369.64	363.92	-12.9%
<b>Washington</b>	517.47	501.57	506.87	483.75	485.19	451.95	442.79	409.06	386.42	359.44	344.50	344.98	344.50	327.64	315.11	-39.1%
<b>Westmoreland</b>	387.31	376.88	368.71	349.54	355.46	328.12	339.67	323.61	323.04	307.82	311.49	321.35	318.25	312.90	293.73	-24.2%

Source: Pennsylvania Department of Health

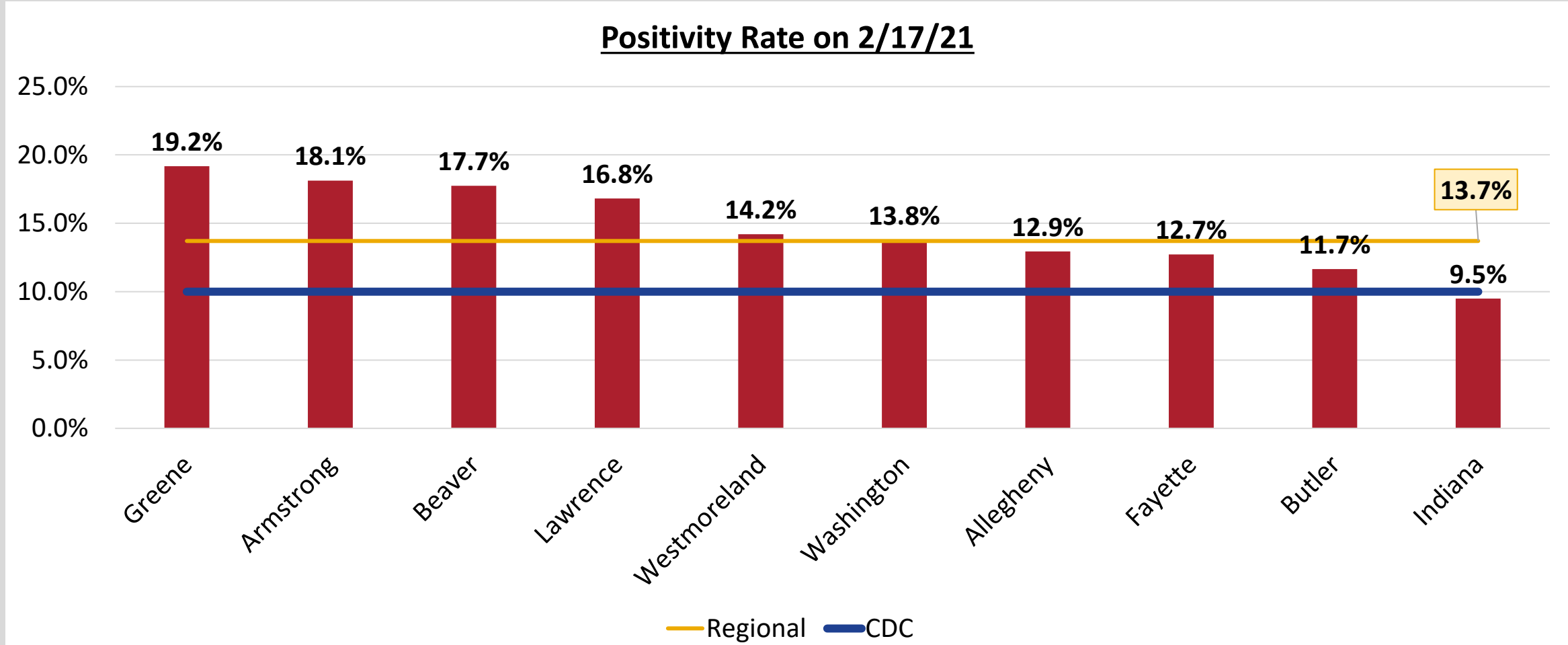
As of Wednesday, February 17, regionally, there are 307 new cases of COVID-19 per 100,000 since February 3. Half of the region is below the regional rate of 307.



The region's fourteen day sum of 307 new COVID-19 cases per 100,000 people (as of February 17) has been decreasing in recent weeks and has reached a level similar to early November.



In May 2020, the Centers for Disease Control and Prevention advised that rates of positivity in testing (percentage of tests that are positive for COVID-19) should remain at 10% or lower for at least 14 days before moving to a less restricted phase of daily activities (ex. business conduct, school attendance). The positivity rate for the region on 2/17/21 is 13.7%.



Note: Positivity is calculated by determining the rolling 7-day average for new confirmed cases and total tests, which is adapted from the methodology used by the Johns Hopkins Coronavirus Resource Center.

Source: Pennsylvania Department of Health

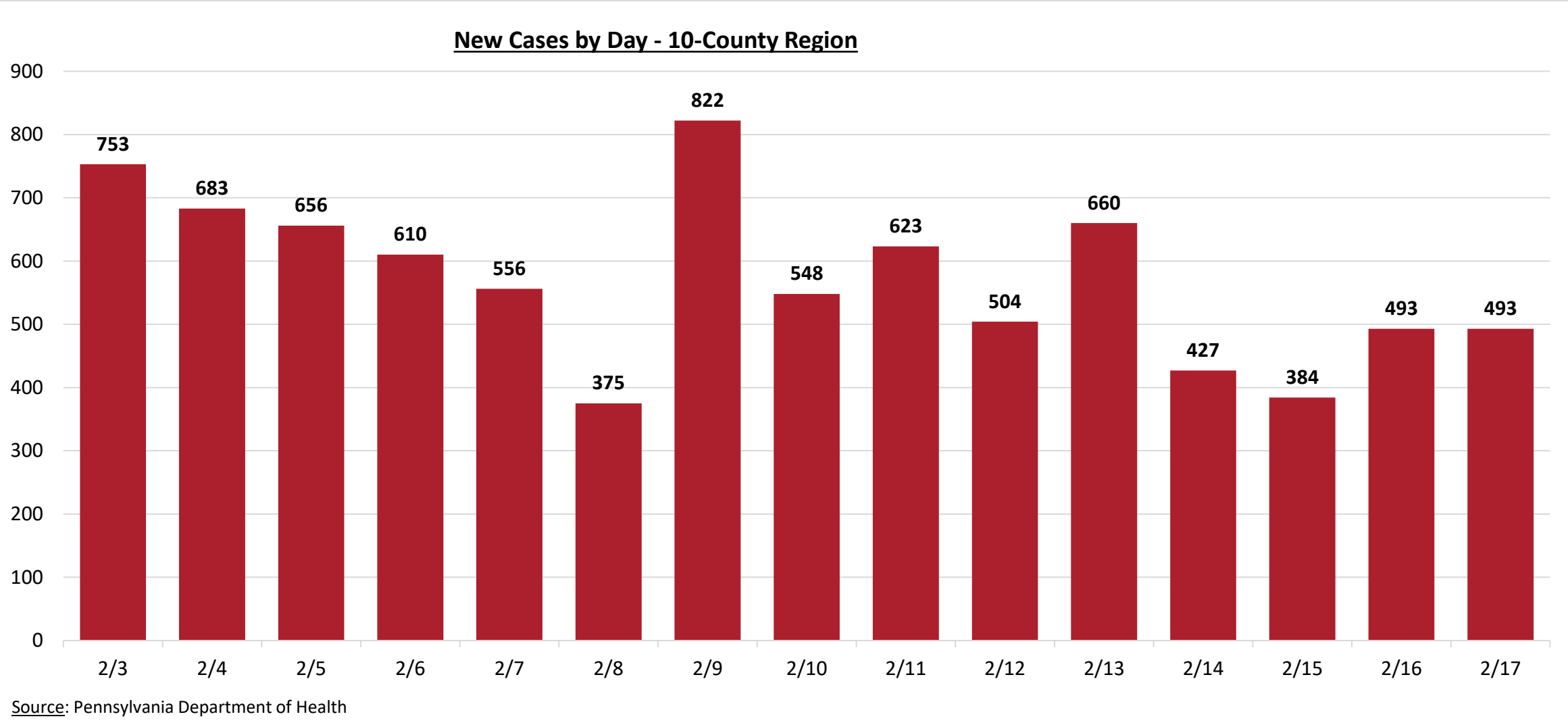


Regionally, daily new cases have decreased from 14 days prior, with the most dramatic changes occurring in Westmoreland (-59%), Washington (-44%), and Fayette (-39%) counties. However, cases in Beaver county have increased 12%.

Daily New Cases by Geography by Date																
	2/3	2/4	2/5	2/6	2/7	2/8	2/9	2/10	2/11	2/12	2/13	2/14	2/15	2/16	2/17	14 Day Change
Pennsylvania	3,128	3,370	4,688	3,930	4,717	2,504	4,088	3,378	3,978	3,987	4,088	2,571	1,945	2,377	3,413	9.1%
10-County	753	683	656	610	556	375	822	548	623	504	660	427	384	493	493	-34.5%
Allegheny	328	313	335	270	260	190	405	239	270	252	306	212	182	199	215	-34.5%
Armstrong	12	12	6	24	11	11	19	12	22	13	14	8	11	6	9	-25.0%
Beaver	57	67	58	26	29	21	74	52	79	38	65	10	37	49	64	12.3%
Butler	54	68	48	61	38	29	65	53	60	23	41	40	24	33	41	-24.1%
Fayette	75	27	33	30	39	19	34	29	23	32	27	24	14	14	46	-38.7%
Greene	11	11	8	10	4	5	23	9	15	2	19	5	8	15	8	-27.3%
Indiana	19	10	21	18	13	7	15	11	14	9	9	9	9	11	12	-36.8%
Lawrence	23	34	23	24	30	9	40	25	20	21	33	10	14	17	18	-21.7%
Washington	59	71	62	75	54	25	54	34	34	48	48	32	33	51	33	-44.1%
Westmoreland	115	70	62	72	78	59	93	84	86	66	98	77	52	98	47	-59.1%

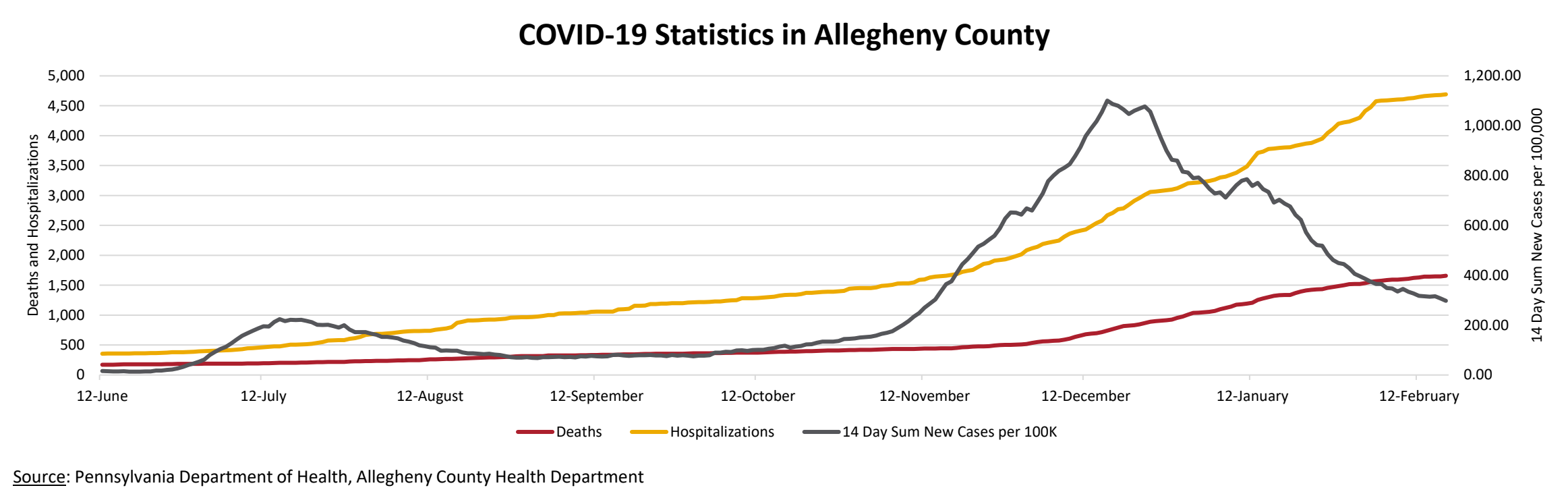
Source: Pennsylvania Department of Health

For the region, daily new cases have decreased 35% from February 3 to February 17.



In Allegheny County, new cases over the past 14 days per 100,000 decreased from 374 on Wednesday, February 3 to 297 on February 17. The 14-day decrease in the rate of COVID-19 between February 3 and February 17 was 21%, part of a larger downward trend of 58% from January 17.

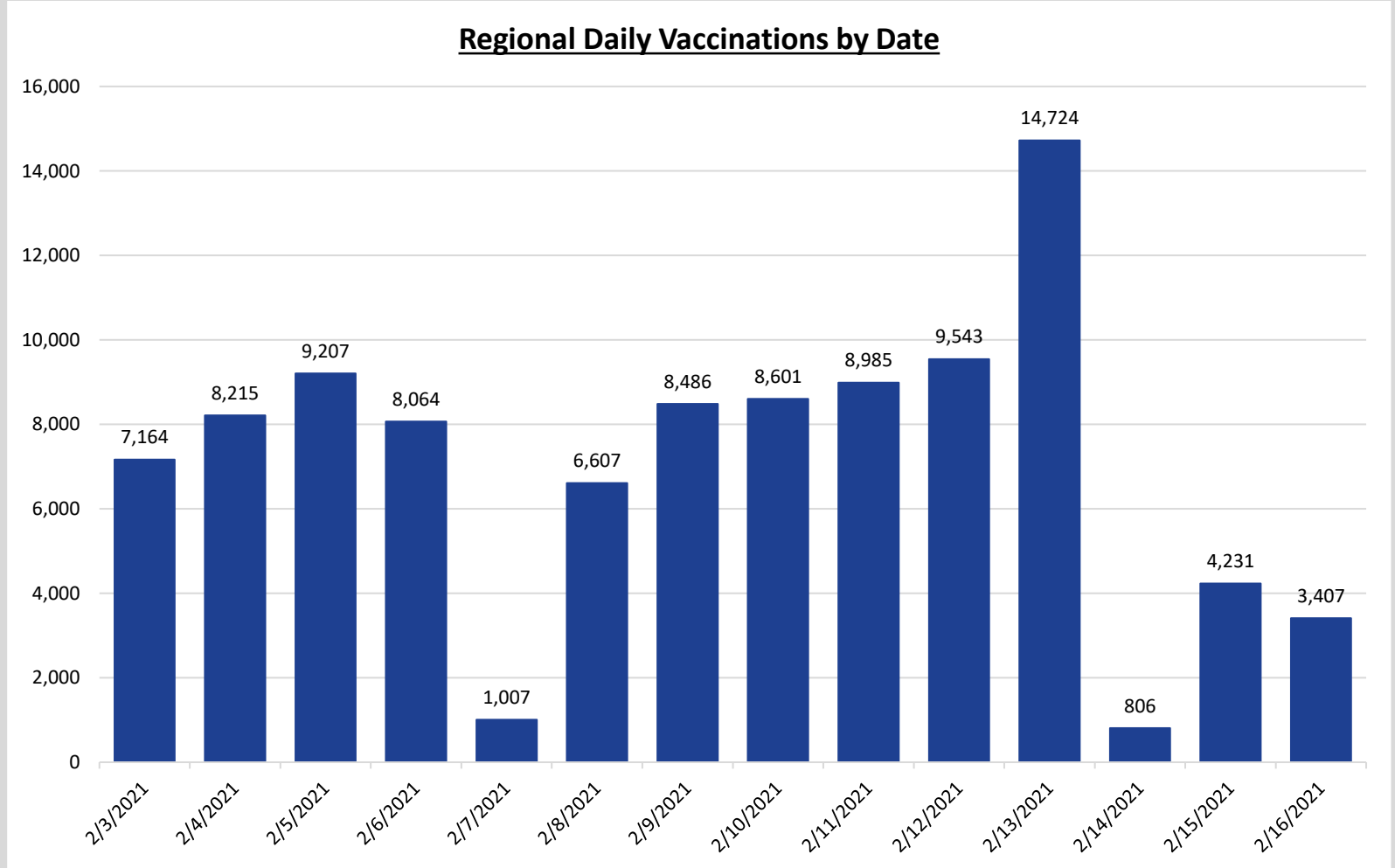
Allegheny County – Change in Deaths, Hospitalizations, and New Cases since January 17					
County	Sunday, January 17	Wednesday, February 3	Wednesday, February 17	14-Day Change	One-Month Change
Deaths	1,334	1,555	1,658	6.6%	24.3%
Hospitalizations	3,794	4,473	4,691	4.9%	23.6%
Fourteen Day Sum New Cases per 100,000	702.54	374.36	297.66	-20.5%	-57.6%



The Pennsylvania Department of Health has been tracking vaccination data by county since mid-December. 178,917 vaccines have been administered in the region as of Wednesday, February 17.

Vaccinations by County as of 2/17/21		
	Partially Covered	Fully Covered
<b>Pennsylvania</b>	860,405	421,640
<b>10-County</b>	178,917	78,898
<b>Allegheny</b>	86,933	41,475
<b>Armstrong</b>	4,573	1,821
<b>Beaver</b>	7,857	2,479
<b>Butler</b>	17,712	7,074
<b>Fayette</b>	8,903	3,595
<b>Greene</b>	2,461	461
<b>Indiana</b>	5,720	1,943
<b>Lawrence</b>	6,046	2,218
<b>Washington</b>	14,559	5,719
<b>Westmoreland</b>	24,153	12,113

Source: Pennsylvania Department of Health



Note: Vaccine numbers are current as of 2/17/21 and are constantly being updated. Recent numbers may not completely capture total vaccinations in recent dates.

2/17/21

Report produced by the Allegheny Conference on Community Development

Data sources include Allegheny County Health Department, Pennsylvania Department of Health and Johns Hopkins Coronavirus Resource Center

For more information, please contact Ellen Gaus at  
[egaus@alleghenyconference.org](mailto:egaus@alleghenyconference.org)