

COVID-19 Data Summary for the Southwestern Pennsylvania Region

Periods covering December to January

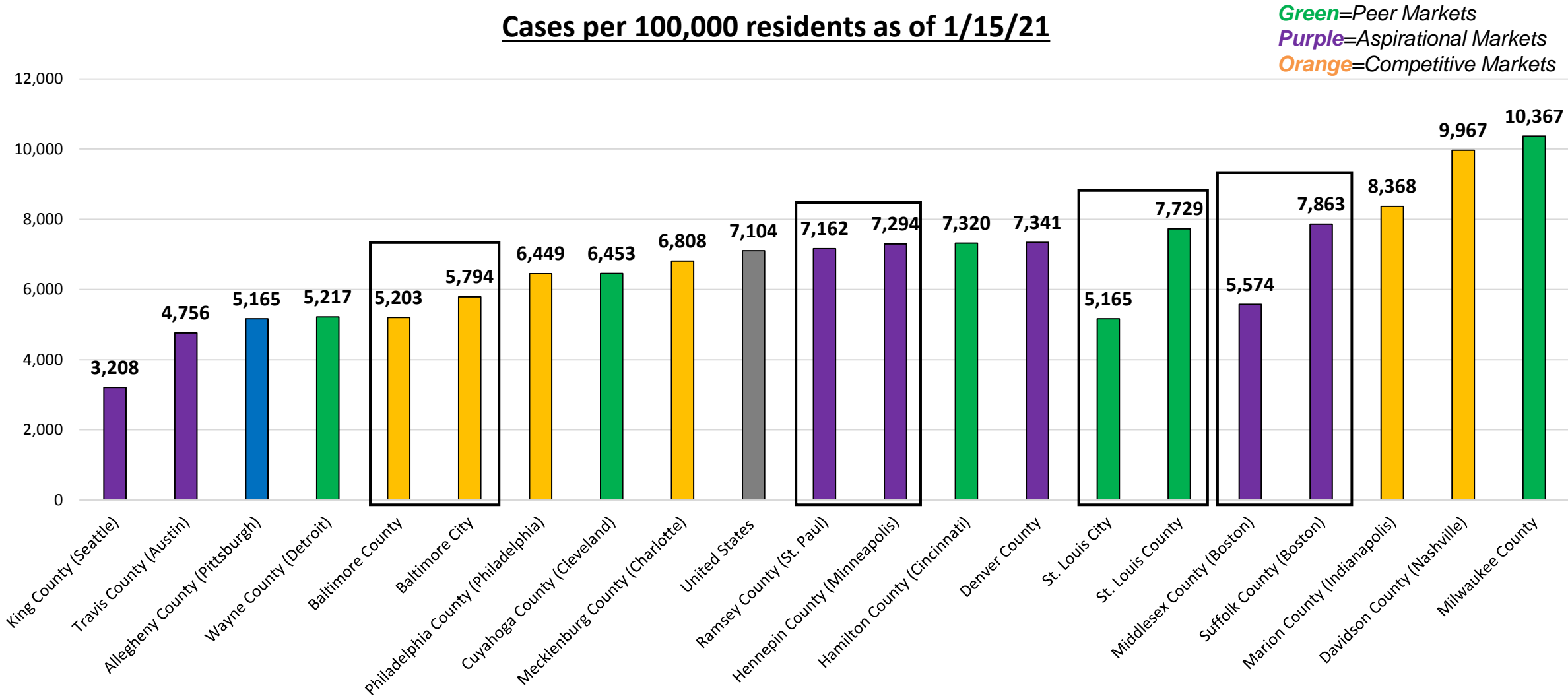
January 20, 2021

Key Takeaways

- As of Wednesday, January 20, Allegheny County's rate of COVID-19 cases per 100,000 residents remains below the national rate.
- From December to January, the increase in the number of cases per 100,000 in Allegheny County was slightly higher than the U.S. but lower than nine benchmark regions. However, the percentage increase exceeded all benchmarks.
- As of Wednesday, January 20, 65,194 vaccines have been administered in the region.
- Regionally, the rate of new COVID-19 cases over a 14-day period (1/6 to 1/20) has decreased 11.6%. Only Washington County has slightly increased cases over a 14-day period.
- Daily new cases for the region have decreased 20.4% from 1/6 to 1/20.
- In Allegheny County, hospitalizations have increased 16.2% between 1/6 and 1/20, which is a decrease from the 14-day hospitalization increase of 23.9% reported in the previous analysis released 12/15/20 analyzing the period between 12/1 and 12/15.

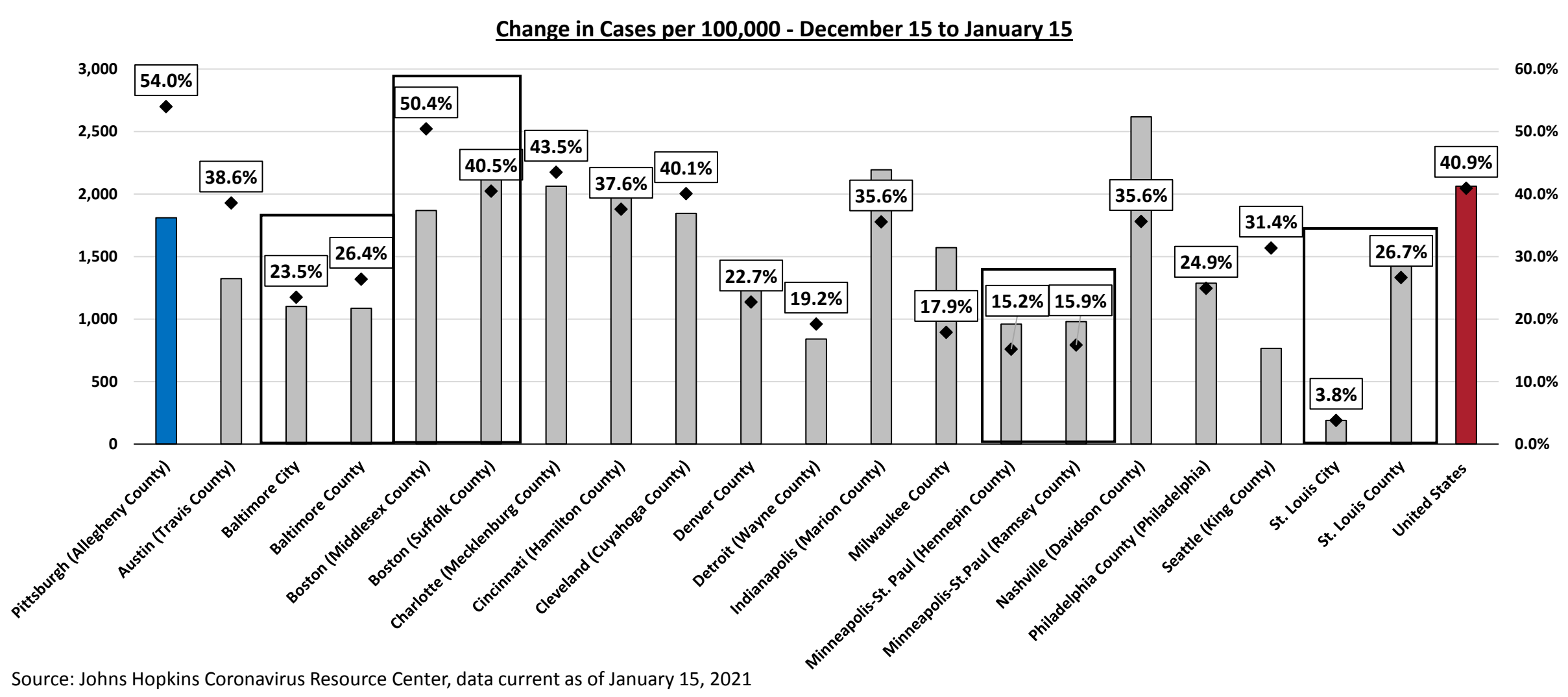
Allegheny County still compares favorably to its benchmark regions in terms of COVID-19 infection rates, although Seattle and Austin rank lower. While Allegheny County traditionally had an infection rate that was less than half that of the nation, it is now just 27% lower than the nation.

Cases per 100,000 residents as of 1/15/21



Source: Johns Hopkins Coronavirus Resource Center, data current as of January 15, 2021

On an absolute basis, the increase in the number of cases per 100,000 in Allegheny County from December to January was slightly higher than the U.S. but was lower than nine benchmark regions. However, the percentage increase in cases per 100,000 exceeded all of the benchmark regions for the second consecutive month.

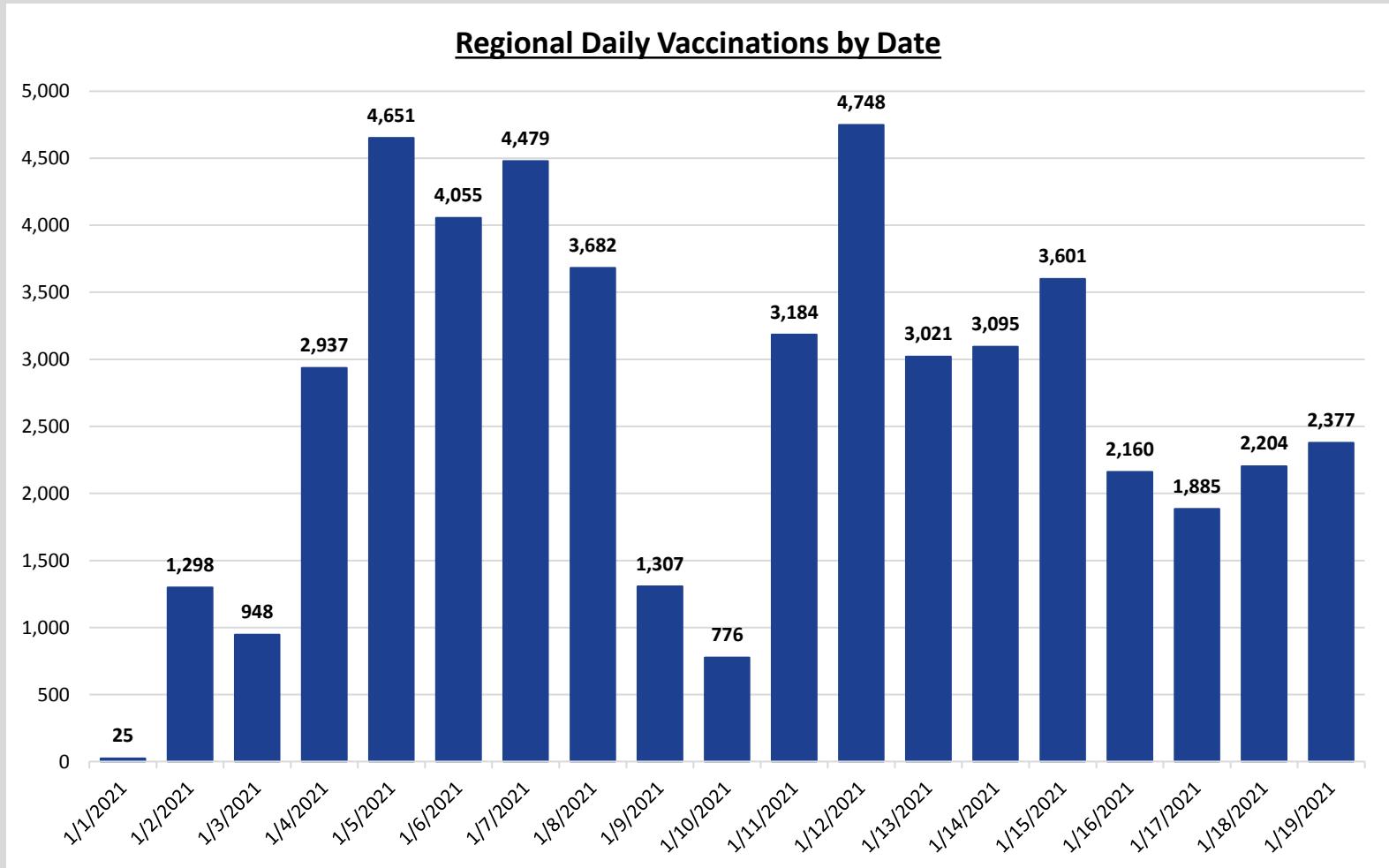


Source: Johns Hopkins Coronavirus Resource Center, data current as of January 15, 2021

The Pennsylvania Department of Health has been tracking vaccination data by county since mid-December. As of Wednesday, January 20, 65,194 vaccines have been administered in the region.

Vaccinations by County as of 1/20/21		
	Partially Covered	Fully Covered
Pennsylvania	354,728	81,009
10-County	65,194	16,285
Allegheny	37,101	8,700
Armstrong	1,726	249
Beaver	2,112	444
Butler	4,842	1,430
Fayette	2,238	1,398
Greene	380	79
Indiana	1,055	622
Lawrence	1,823	401
Washington	4,816	44
Westmoreland	9,101	2,918

Source: Pennsylvania Department of Health



Note: Vaccine numbers are current as of 1/20/21 and are constantly being updated. Recent numbers may not completely capture total vaccinations in recent dates.

1/20/21

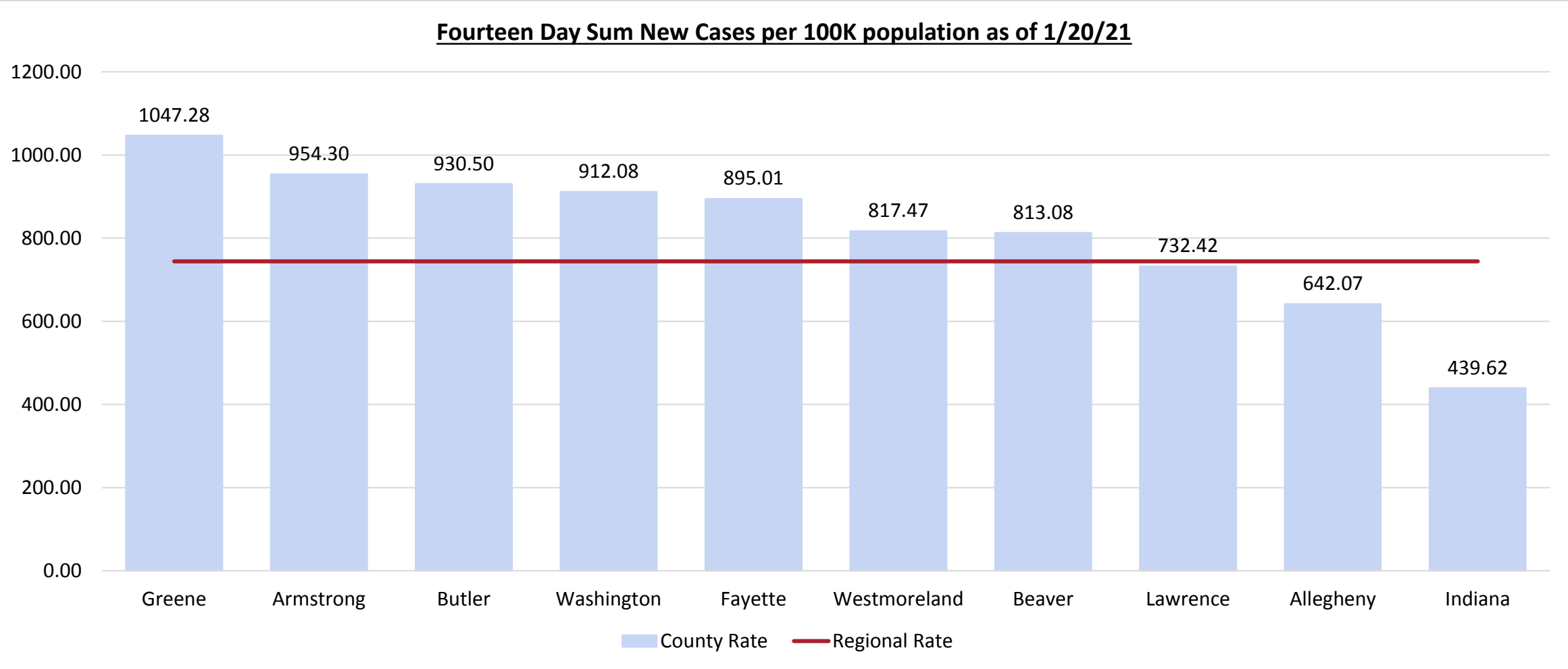
Only one county in the region has increased new cases of COVID-19 per 100,000 in the fourteen-day period between January 6 and January 20. The regional rate of change of COVID-19 per 100,000 is below the state (-11.6% to -2.4%).

Fourteen Day Sum New Cases per 100,000 population by Geography by Date

	1/6	1/7	1/8	1/9	1/10	1/11	1/12	1/13	1/14	1/15	1/16	1/17	1/18	1/19	1/20	14 Day Change
Pennsylvania	799.25	802.90	826.39	845.65	870.47	878.34	868.41	860.41	846.20	833.17	816.85	828.14	834.54	807.36	780.08	-2.4%
10-County	842.16	821.50	854.75	887.18	910.47	919.53	872.24	883.88	859.57	856.67	815.93	824.83	803.73	792.87	744.17	-11.6%
Allegheny	731.91	711.67	736.97	761.20	779.32	785.11	758.51	770.34	744.88	734.03	691.44	702.54	686.87	676.18	642.07	-12.3%
Armstrong	1,088.48	1,124.66	1,109.59	1,174.41	1,194.01	1,162.35	1,159.34	1,142.75	1,073.40	1,061.34	1,043.25	1,041.75	1,034.21	995.01	954.30	-12.3%
Beaver	819.07	825.06	871.80	912.54	949.39	976.66	952.69	934.71	902.36	926.92	877.19	887.98	874.80	855.62	813.08	-0.7%
Butler	1,079.51	1,067.72	1,112.74	1,137.40	1,160.72	1,166.88	1,100.41	1,088.62	1,059.68	1,070.40	1,046.28	1,046.81	1,022.16	995.36	930.50	-13.8%
Fayette	1,322.86	1,238.95	1,318.33	1,333.44	1,370.48	1,380.31	1,201.91	1,229.13	1,169.41	1,155.80	1,112.72	1,118.76	1,086.26	1,072.65	895.01	-32.3%
Greene	1,098.43	1,076.89	1,122.66	1,136.12	1,199.39	1,206.12	1,152.27	1,136.12	1,039.20	1,125.35	1,114.58	1,087.66	1,058.04	1,084.97	1,047.28	-4.7%
Indiana	541.08	534.08	558.57	577.23	588.30	602.88	594.72	588.89	560.90	549.24	529.42	537.58	542.24	538.74	439.62	-18.8%
Lawrence	759.88	728.98	734.71	781.63	828.55	852.58	811.38	829.69	826.26	807.95	767.89	772.47	751.87	751.87	732.42	-3.6%
Washington	867.27	843.18	894.74	971.83	985.80	1,000.74	925.57	979.54	1,002.66	994.47	954.96	982.43	956.89	958.34	912.08	5.2%
Westmoreland	935.30	910.22	947.14	984.07	1,012.82	1,025.23	952.22	969.69	952.78	962.65	911.34	913.32	870.47	862.01	817.47	-12.6%

Source: Pennsylvania Department of Health

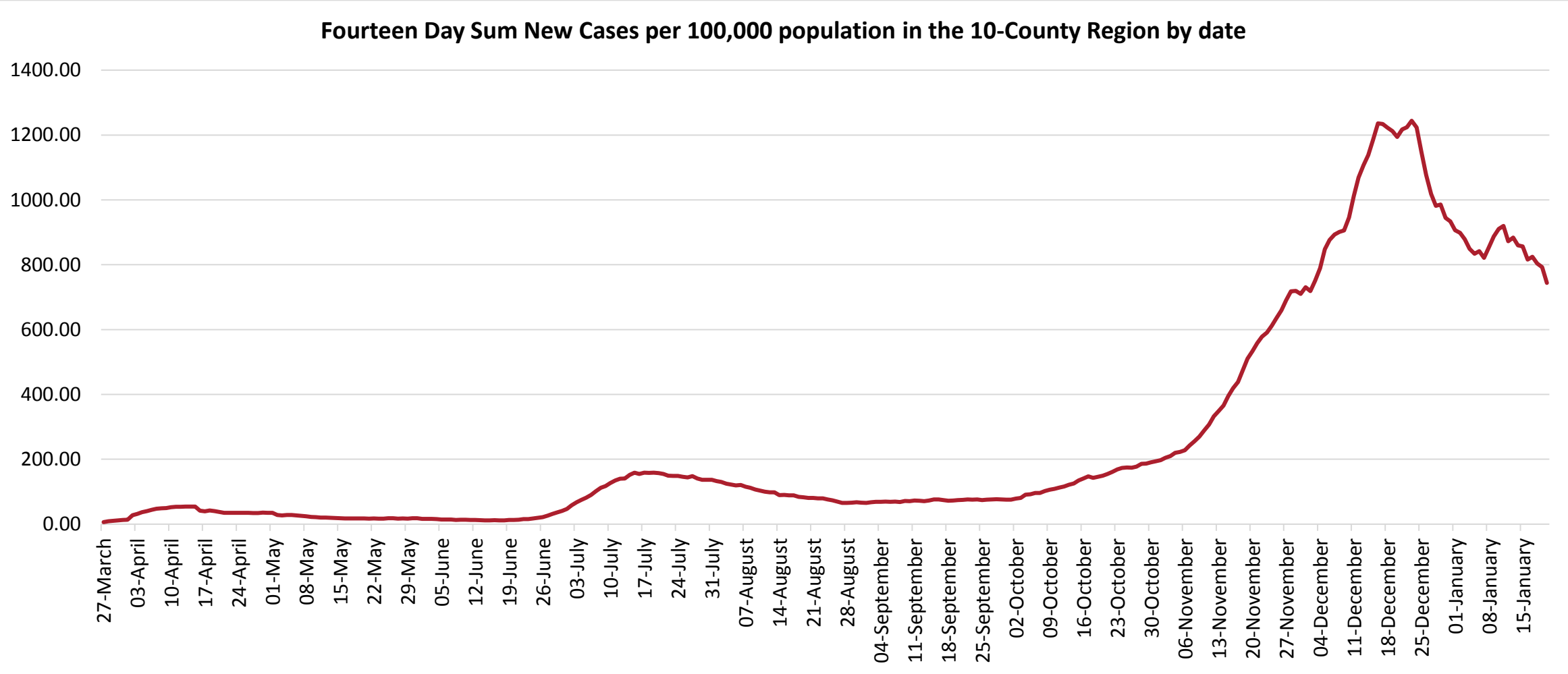
As of Wednesday, January 20, regionally, there are 744 new cases of COVID-19 per 100,000 since January 5. Only Lawrence, Allegheny and Indiana counties are below the regional rate of 744.



Source: Pennsylvania Department of Health

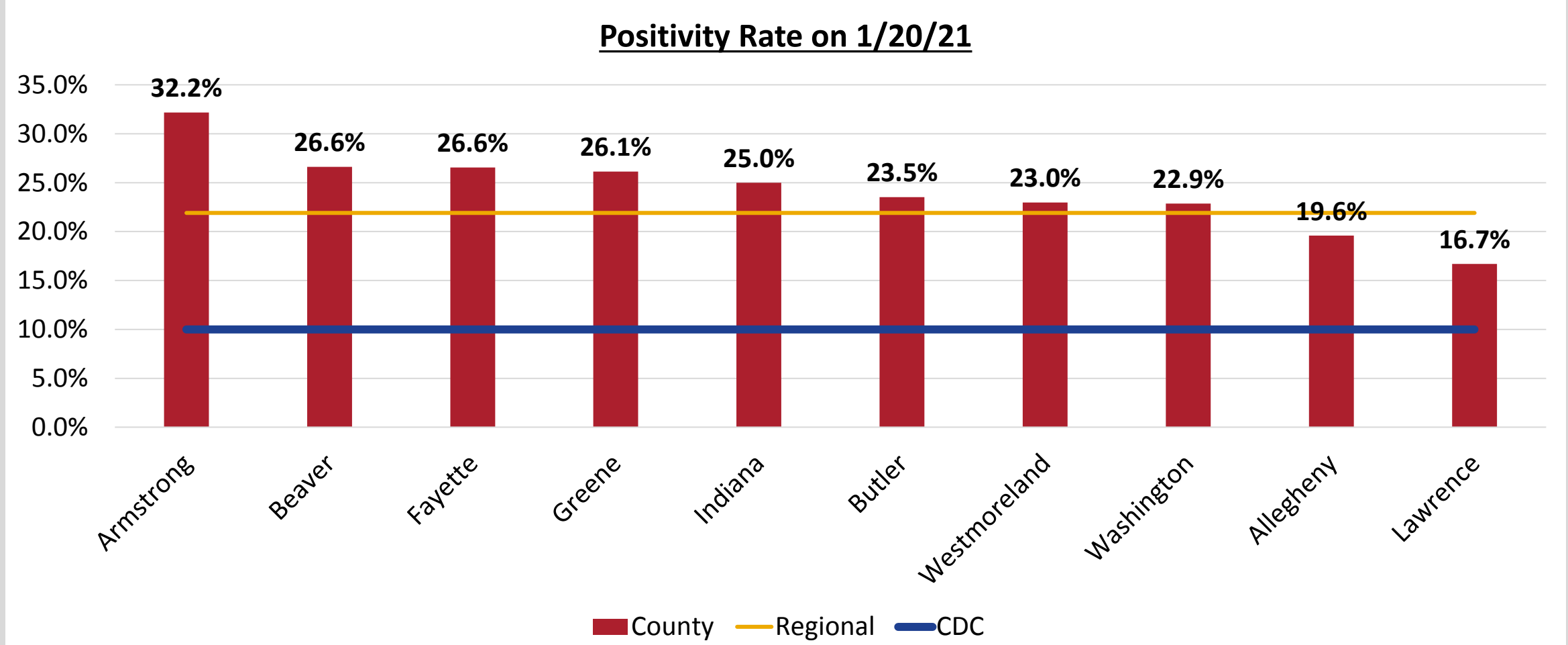
1/20/21

As of Wednesday, January 20, regionally there are 744 new cases of COVID-19 over the past 14 days per 100,000 people. This figure has been decreasing in recent weeks and has reached a level similar to early December.



Source: Pennsylvania Department of Health

In May 2020, the Centers for Disease Control and Prevention advised that rates of positivity in testing (percentage of tests that are positive for COVID-19) should remain at 10% or lower for at least 14 days before moving to a less restricted phase of daily activities (ex. business conduct, school attendance). The positivity rate for the region on 1/20/21 is 21.9%.



Note: Positivity is calculated by determining the rolling 7-day average for new confirmed cases and total tests, which is adapted from the methodology used by the Johns Hopkins Coronavirus Resource Center.

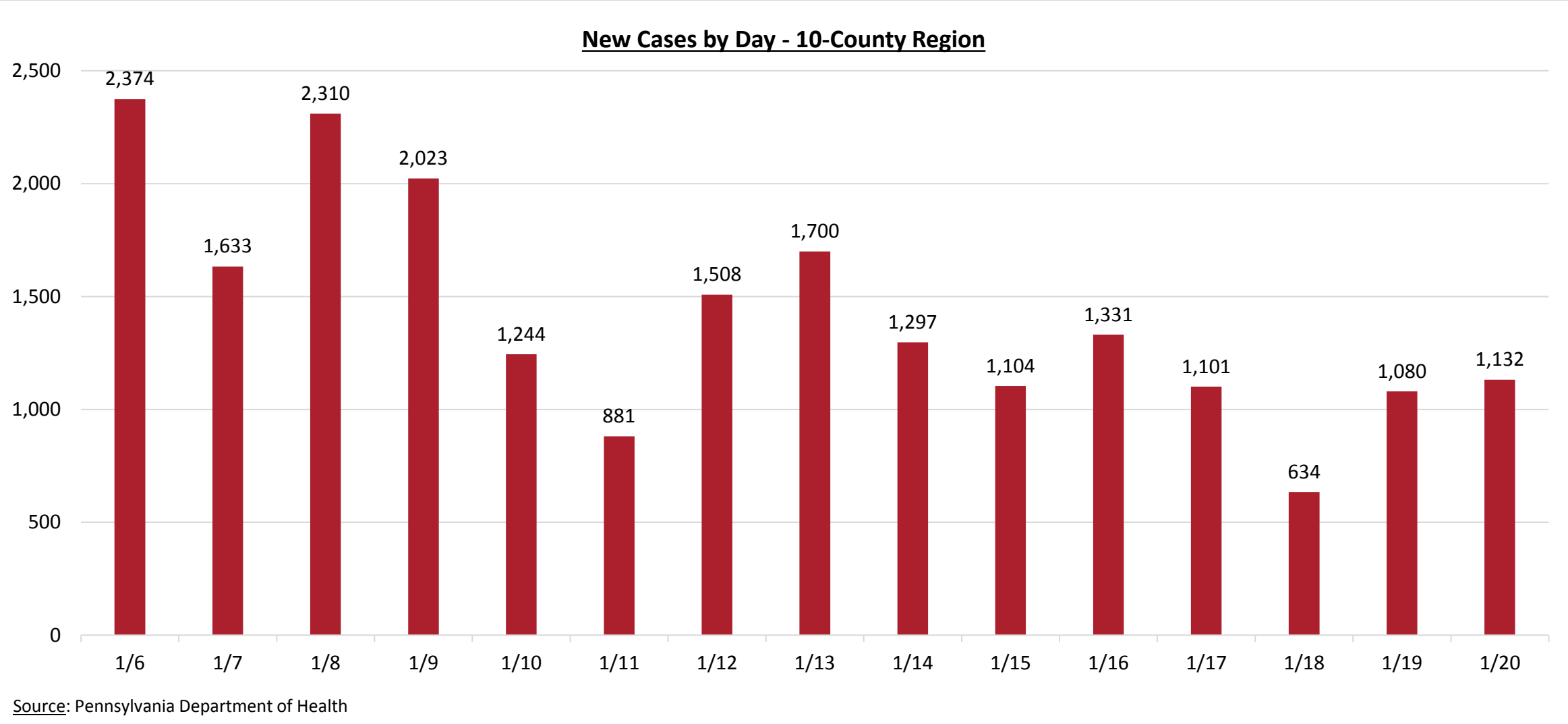
Source: Pennsylvania Department of Health

Regionally, daily new cases have decreased from 14 days prior, with the most dramatic changes occurring in Armstrong (-47%), Beaver (-36%), and Butler (-34%) counties. However, cases in Greene county have increased 50%.

Daily New Cases by Geography by Date																
	1/6	1/7	1/8	1/9	1/10	1/11	1/12	1/13	1/14	1/15	1/16	1/17	1/18	1/19	1/20	14 Day Change
Pennsylvania	8,818	9,474	9,698	10,178	10,045	7,506	5,338	7,275	7,960	7,175	6,047	7,166	6,023	4,045	5,341	-39.4%
10-County	1,357	2,374	1,633	2,310	2,023	1,244	881	1,508	1,700	1,297	1,104	1,331	1,101	634	1,080	-20.4%
Allegheny	565	881	664	967	849	519	368	694	670	499	420	526	516	280	434	-23.2%
Armstrong	55	67	85	68	62	39	5	55	61	64	34	46	33	12	29	-47.3%
Beaver	89	167	116	168	130	77	61	128	105	85	112	120	62	40	57	-36.0%
Butler	147	215	137	208	200	106	74	119	166	116	101	157	103	58	97	-34.0%
Fayette	70	302	103	160	138	78	42	76	114	90	56	112	57	39	52	-25.7%
Greene	20	38	31	44	32	39	18	28	31	-5	59	27	16	15	30	50.0%
Indiana	38	111	39	44	36	19	22	23	30	15	24	18	23	23	35	-7.9%
Lawrence	40	55	53	84	71	56	36	45	63	33	25	40	33	23	40	0.0%
Washington	105	207	126	221	232	80	82	133	183	197	120	112	124	64	108	2.9%
Westmoreland	228	331	279	346	273	231	173	207	277	203	153	173	134	80	198	-13.2%

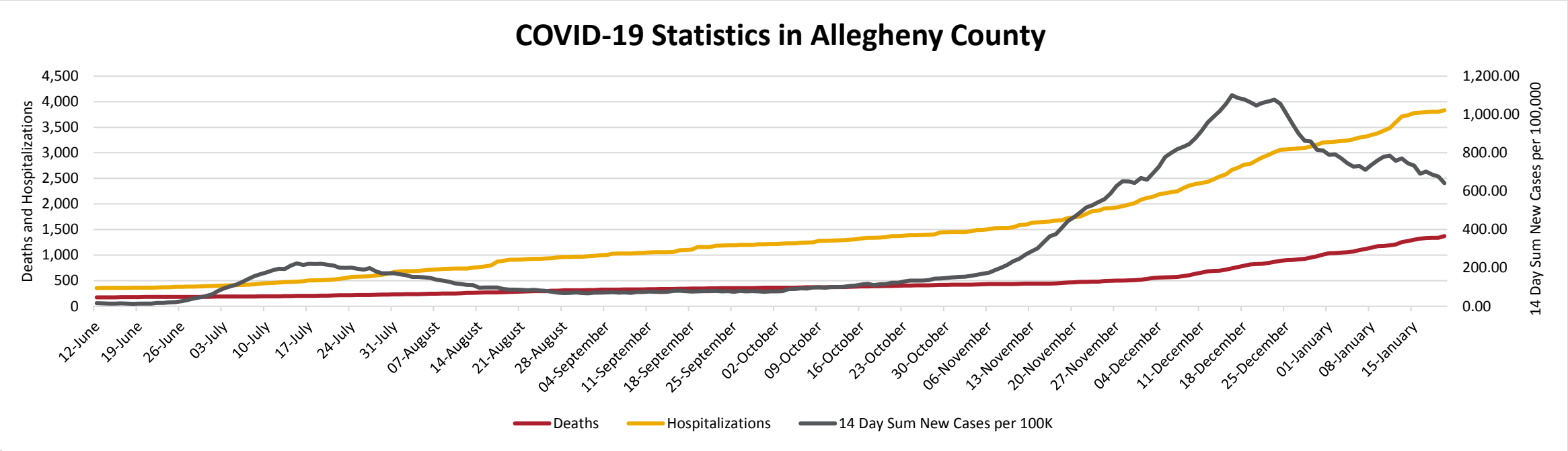
Source: Pennsylvania Department of Health

For the region, daily new cases have decreased 52% from January 6 to January 20.



In Allegheny County, new cases over the past 14 days per 100,000 decreased from 732 on Wednesday, January 6 to 642 on Wednesday, January 20. The 14-day decrease in the rate of COVID-19 between January 6 and January 20 was 12%, part of a larger downward trend of 39% from December 20.

Allegheny County – Change in Deaths, Hospitalizations, and New Cases since December 20					
County	Sunday, December 20	Wednesday, January 4	Wednesday, January 20	14-Day Change	One-Month Change
Deaths	823	1,055	1,370	24.7%	66.5%
Hospitalizations	2,847	3,241	3,832	16.2%	34.6%
Fourteen Day Sum New Cases per 100,000	1,046.46	746.68	642.07	-12.3%	-38.6%



Source: Pennsylvania Department of Health, Allegheny County Health Department

Report produced by the Allegheny Conference on Community Development

Data sources include Allegheny County Health Department, Pennsylvania Department of Health and Johns Hopkins Coronavirus Resource Center

For more information, please contact Ellen Gaus at
egaus@alleghenyconference.org