



ALLEGHENY CONFERENCE ON COMMUNITY DEVELOPMENT

2014 Annual Report

GREATER PITTSBURGH CHAMBER OF COMMERCE
PENNSYLVANIA ECONOMY LEAGUE OF GREATER PITTSBURGH
PITTSBURGH REGIONAL ALLIANCE



“Our region’s enduring spirit of cooperation and collaboration – across political, geographic and organizational lines – makes progress possible. We work together. It’s what makes Pittsburgh a special place.”

– **Morgan O’Brien**

Chair, Allegheny Conference on Community Development



The Allegheny Conference on Community Development and its affiliates – the Greater Pittsburgh Chamber of Commerce, the Pennsylvania Economy League of Greater Pittsburgh and the Pittsburgh Regional Alliance – work together to improve the economy and the quality of life in southwestern Pennsylvania.





3

State of the Region



4

Enhancing Opportunity



12

Strengthening Communities



17

Energizing Our Economy



19

What's Next for Our Region?



21

Setting Our 2015-2017 Agenda



23

Our 2015-2017 Agenda:

- People
- Economy & Community
- Infrastructure



25

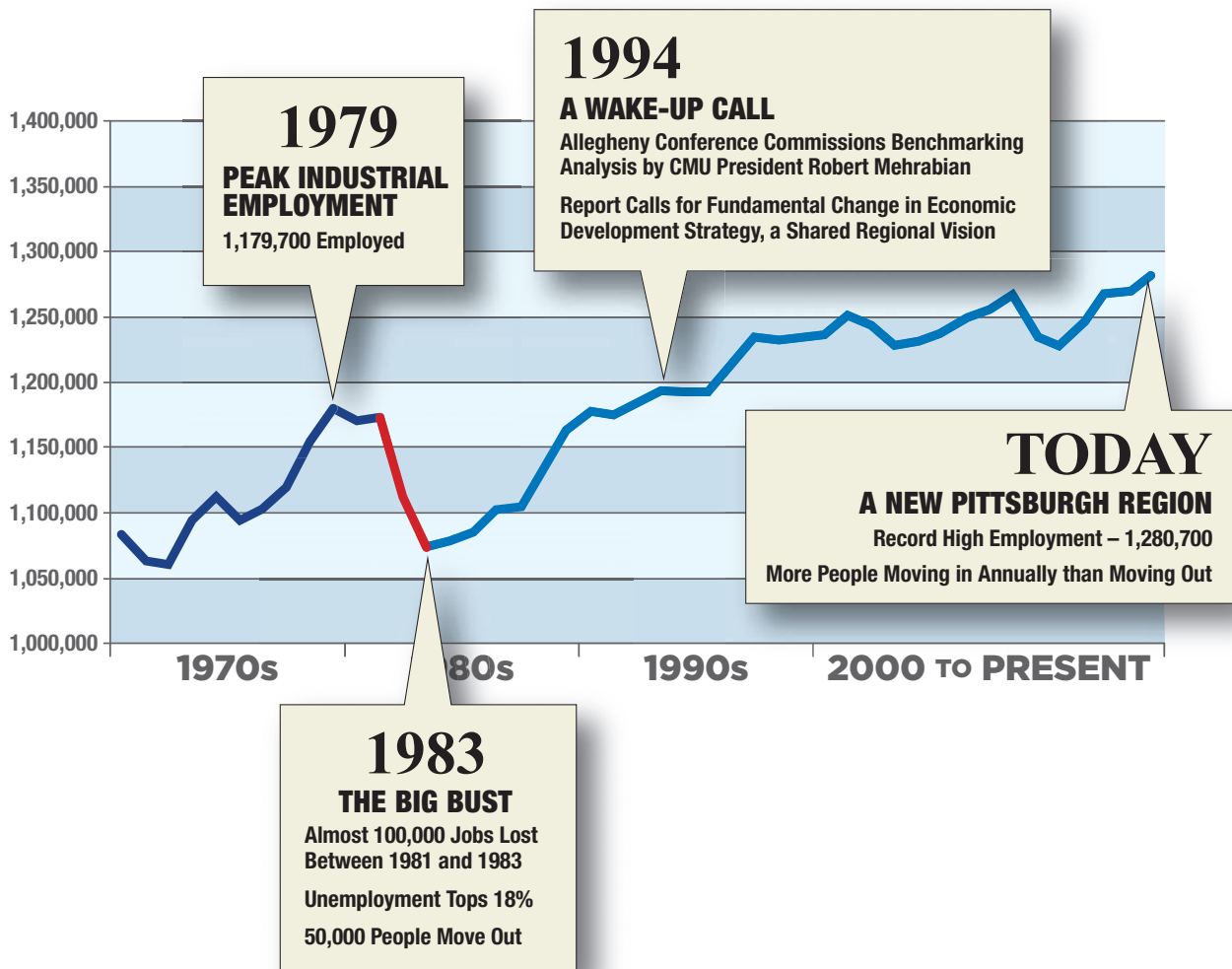
The Next Generation of Leaders



26

The People Behind the Progress

Record High Employment



Transformation Complete. Raring to Compete.

We have record-high employment.

More people are working in the Pittsburgh region than ever before.

We're a top business investment location.

Pittsburgh was named a Top 10 metro for business investment in the U.S. in 2011 and 2012 and No. 1 in the Northeast by *Site Selection* magazine in 2012.

We're starting to grow.

11,400 more people have moved into the metro area than moved out since 2010.

We're getting younger.

The median age in the city of Pittsburgh is 33.7, below the national average of 37.5.

We're better educated.

The Pittsburgh region has the third-highest concentration of people in the labor force aged 25-44 with graduate or professional degrees, right after Washington, D.C. and Boston.



Increasing Investment. Creating Jobs.

The Pittsburgh Regional Alliance (PRA) and its partners have made a big impact by securing economic development projects, capital investment and jobs for southwestern Pennsylvania.

Here are a few PRA-assisted projects from the past three years.



Aquion Energy

Westmoreland County

- \$70 million investment
- 300 new jobs



Mylan Inc.

Washington County

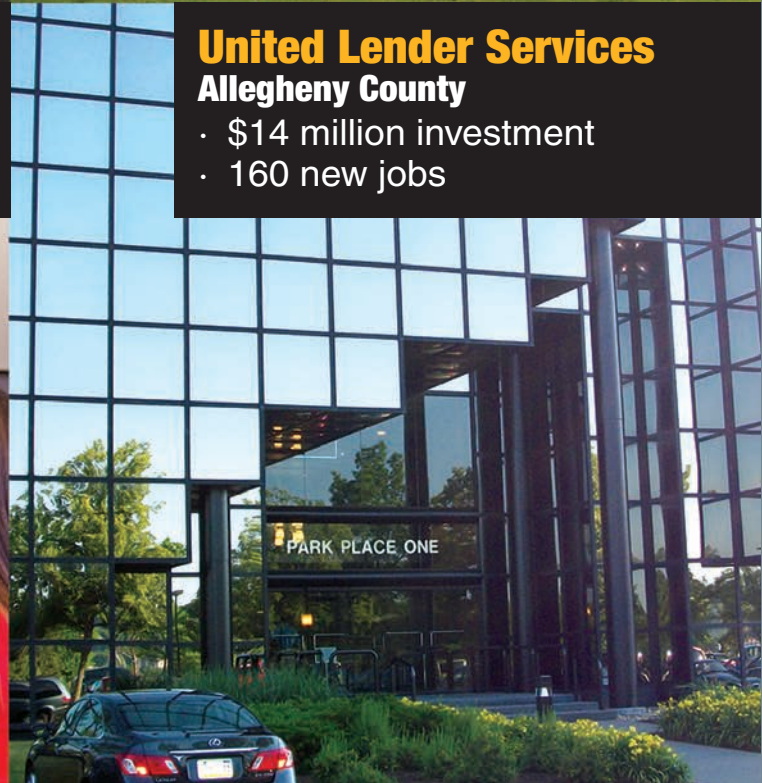
- \$60 million investment
- 200 new jobs



ANSYS, Inc.

Washington County

- \$52 million investment
- 180 new jobs



United Lender Services

Allegheny County

- \$14 million investment
- 160 new jobs

Enhancing Opportunity

↓ *See our list of accomplishments*

The Pittsburgh Region's Sustainable Economy Attracts Strategic Investment

In partnership with leaders of the business community, elected officials and economic development professionals across 10 counties, the PRA – the economic development marketing affiliate of the Allegheny Conference – works to increase new investment in southwestern Pennsylvania and helps existing businesses to grow.

- Eight Fortune 500 companies call the region home.
- More than 100 billion-dollar-plus global corporations operate major business units here.

A regional economy that's diversified, balanced and sustainable continues to secure steady and stable business investment – businesses of all sizes and scopes – for southwestern Pennsylvania.



4moms, a robotics company innovating high-end baby gear, moved its headquarters to 80,000 SF in downtown Pittsburgh in 2014, an investment expected to create 120 jobs



“The Pittsburgh region is a top business investment location. We have been ranked in the top 10 among regions nationwide for economic development projects, and No.1 in the Northeast twice. Over the past three years, 845 economic development deals or ‘wins’ were landed for the region; the PRA assisted with 128 of these.”

– **David Malone**
Chair, Pittsburgh Regional Alliance

Pittsburgh Regional Alliance by the Numbers (2012-14)

50+

**PRA Partnership
Members**



10

**counties
working
together ...**



To market **1 region ...**

300+ marketing and media initiatives/engagements
32 international delegations and missions



**Generating opportunities for
business investment ...**

360+ market research requests fulfilled to support
partners' economic development efforts
324 outreach meetings with regional businesses
288 site selection consultant engagements
600+ companies considering regional investments

**Resulting in job-creating
deals and investments**

128 investments

\$1.6 Billion in capital investment

12,559 new and retained jobs



Attracting and Retaining Talent

ImaginePittsburgh.com is the most comprehensive resource for career opportunities in the Pittsburgh region. The site is the platform for the Allegheny Conference's work to connect people to opportunity across the region, through the leadership of our Workplace Committee chaired by David Porges.



BY THE NUMBERS:

721,710 Job searches
(June 2013 to December 2014)

182,923 Unique users
(June 2013 to December 2014)

24,000 Average number of
jobs listed daily

900+ Jobs sites
aggregated daily









Putting People to Work

ShaleNET is a comprehensive recruitment, training, placement and retention program for jobs in the oil and gas industry. The Allegheny Conference facilitated the development of the program in partnership with the Pennsylvania College of Technology and Westmoreland County Community College. In 2012, the U.S. Department of Labor announced a \$14.9 million grant to expand ShaleNET to five states. The award affirmed Pennsylvania's leadership in energy workforce development.



BY THE NUMBERS:

\$19.924 Million

**U.S. Department of Labor
grant funds awarded to
support ShaleNET**

3,677 People put to work

43,654 Unique visitors to ShaleNet.org

*Overlooking the Penn Avenue
business district in Wilkinsburg*



Strengthening Communities

↓ *See our list of accomplishments*

Creating A More Livable Region For All

The Allegheny Conference created the **Strengthening Communities Partnership**, chaired by Bill Schenck, to make long-term, positive impacts in communities that have been left behind despite the region's economic recovery.

\$10 Million

Funds leveraged by Allegheny Conference members to help participating communities fully carry out their revitalization plans

Five community development organizations are participating in the program, representing:

McKees Rocks Wilkinsburg
Mt. Oliver/Knoxville Connellsville
City of Washington





Improving Wastewater Management

Stormwater overflow, which dumps raw sewage into our rivers during heavy rains, represents a real environmental challenge for the region. In response to an EPA consent decree, the Allegheny Conference convened a blue ribbon panel chaired by Jared Cohon to determine ways that wastewater management in the 83-municipality ALCOSAN service area could be improved through greater regionalization.



“We’ve made real progress in improving the way our region’s stormwater system is managed. Work is under way to transfer trunk sewer lines from municipal control to ALCOSAN, to broaden suburban representation on the ALCOSAN board and to implement regional green infrastructure initiatives.”

– **Laura Ellsworth**

Chair, Pennsylvania Economy League of Greater Pittsburgh





Energizing Our Economy

↓ *See our list of accomplishments*

Historic Statewide Transportation Funding Solution Reached

Pennsylvania's most comprehensive piece of state transportation legislation in decades was signed into law in 2013. The law invests an additional \$2.4 billion annually in roads, bridges, highways, transit systems, ports, bike paths and other areas. A top priority of the Allegheny Conference Transportation and Infrastructure Committee chaired by Gregory Jordan and Flemming Bjoernslev, it represents a big step forward in securing the competitiveness of Pennsylvania and our region for years to come.

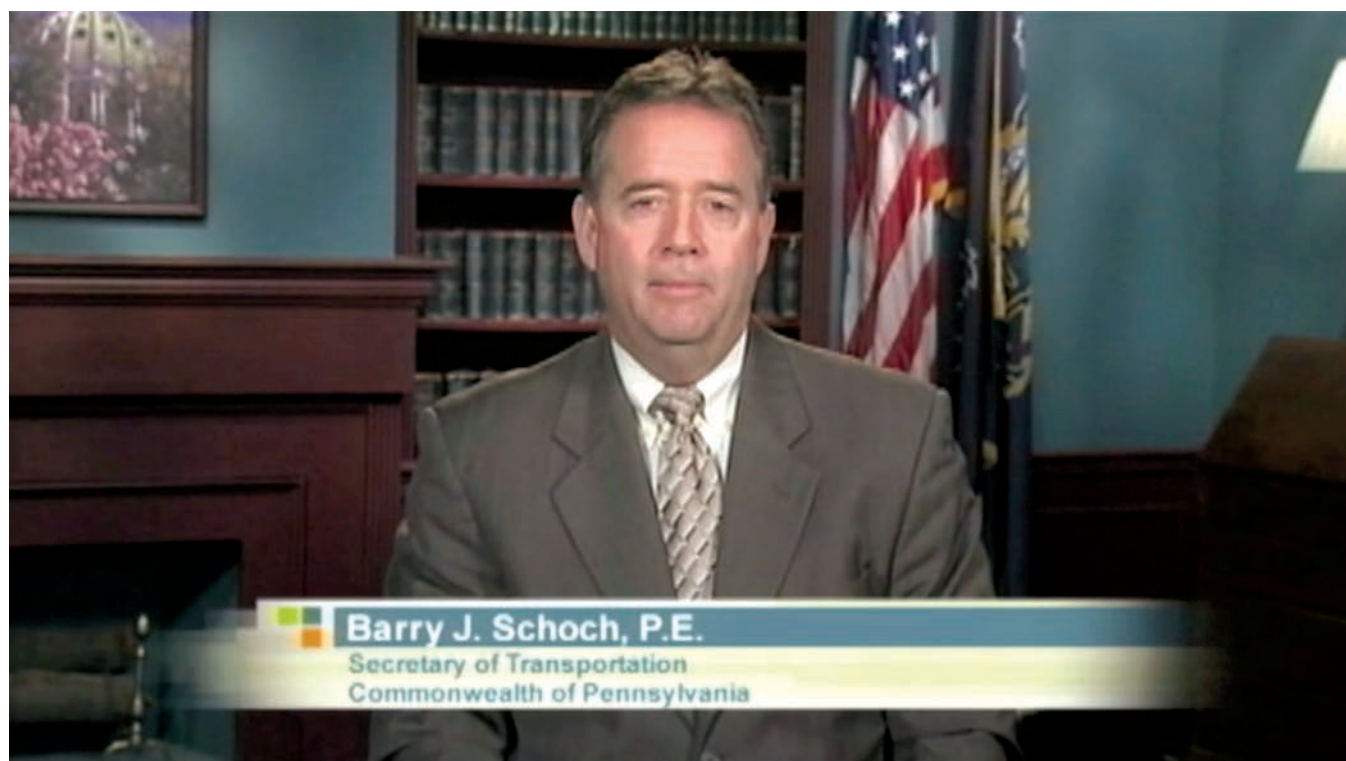
BY THE NUMBERS:

\$2.4 Billion Additional funds invested annually into Pennsylvania's transportation network

\$500 Million Produced per year to support transit agencies, including the Port Authority of Allegheny County

50,000 Estimated number of new jobs created statewide

12,000 Estimated number of jobs retained statewide





Improving the Region's Economic Competitiveness

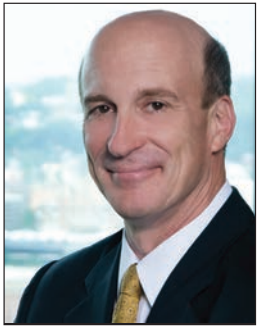
The Greater Pittsburgh Chamber of Commerce makes the case in Harrisburg and Washington, D.C. for the Allegheny Conference's agenda to create a more competitive economic climate. Working with partners across the state, we've been successful in continuing the phase-out of the Capital Stock and Franchise Tax, and in making positive structural changes to the Corporate Net Income Tax. We provided leadership in convening the Coalition for Sustainable Communities, a statewide alliance committed to addressing unfunded pension liabilities and unbalanced Act 111 practices.



“A more competitive economic climate encourages employers to expand and locate here, which in turn creates well-paying jobs that can support families. The progress we've made in making Pennsylvania's economic climate more competitive helps level the playing field with neighboring states.”

– **Richard Harshman**

Chair, Greater Pittsburgh Chamber of Commerce



“Our achievements as a region are reason to celebrate, but we can’t afford to become complacent. We still have work to do. It’s time to focus our energies on tackling a new challenge – the composition of our population and our workforce.”

– **Dennis Yablonsky**

CEO, Allegheny Conference on Community Development



"Big Blue Bear," a public art installation at the Colorado Convention Center in Denver

Setting Our 2015-2017 Agenda

We hosted a series of listening sessions across the region to develop our next three-year strategy to improve the region's economy and quality of life. In every session, we asked participants what would make our region the "best place" to be and where the Allegheny Conference could make the biggest difference. Workforce and demographics stood out as the top issue of concern. Transportation and connectivity was a close second – defined broadly – roads and bridges, public transit and bike trails.



Almost 100 civic leaders participated in our benchmarking trip to Denver, Colorado to learn what another on-the-move region is up to. Feedback from the trip provided important insight for the creation of our 2015-2017 agenda.

BY THE NUMBERS:

1,000+
Participants

51 **Group sessions**
across all
10 counties
in the region

90% **Percentage of Regional**
Investors Council
organizations that
participated in our
agenda-setting process



Our region will be re-made in the next generation.

**We can have it happen to us or we can take the lead.
Our diverse economy is strong, but a wave of demographic
change is coming that will challenge that strength.**

**We have the opportunity to have the youngest, best-skilled
population in the country if we are proactive and become
a magnet for talent.**

**By building connectivity among our people, our economy
and community and our infrastructure in innovative ways,
we will shape our future together.**



Three Strategies to Advance Our Region

The Allegheny Conference is aligning three strategies to make the Pittsburgh region the location of choice for individuals seeking opportunity.

The **People** strategy chaired by Bill Demchak is all about connections – connecting people to skills, job seekers to employers and populations on the move to opportunity in our region.

The **Economy & Community** strategy chaired by Jerry MacCleary is focused on leveraging our competitive strengths in **energy & manufacturing** and **information technology & financial and business services** to enhance business attraction and expansion, and to better align this work with our program to strengthen communities left behind despite our region's economic recovery.

The **Infrastructure** strategy chaired by Nick Deluliis focuses on improving systems and structures that enhance the economy, sustain the population and improve our quality of life.

"I tell a lot of my friends that Pittsburgh has been good to me. I live here. I work here. I bought my first house here. I met my fiancé here. Things have been good for me."

– *Eugene Williams III*
Sr. Clinical Specialist, Medtronic Inc.
and Long Island native





The Next Generation of Leaders

Our region's future will be defined by the next generation of leaders. We must do a better job of educating, training, advancing and attracting enough people to fill the jobs that are being created and the jobs of the retiring Baby Boom generation.

We asked a few of the region's young leaders what it will take to retain and attract more people like them in a video that we created for our 2014 annual meeting.

Nate Hanson
Chief of Staff,
Pittsburgh City
Councilwoman
Deborah L. Gross

Caroline Passerello
Corporate Dietitian,
Giant Eagle, Inc.

**Cindy
Fernandez-Nixon**
Senior Project
RAMS Manager,
Ansaldo STS

Mark Beckett
Project Manager,
Century Steel
Erectors Co.

Jessica Brooks
Executive Director,
Pittsburgh Business
Group on Health

Audric Dodds
Operations Manager,
External Affairs,
EQT Corporation

Melissa Stephens
Government
Compliance Officer,
Highmark Inc.



ALLEGHENY CONFERENCE ON COMMUNITY DEVELOPMENT

2014 Board of Directors

OFFICERS

CHAIR Morgan K. O'Brien
VICE CHAIR Laura E. Ellsworth
VICE CHAIR Richard J. Harshman
VICE CHAIR David J. Malone
TREASURER Kimberly Tillotson Fleming

SECRETARY Michele Fabrizi
CHIEF EXECUTIVE OFFICER Dennis Yablonsky
PAST CHAIR Charles E. Bunch
AT COUNSEL David A. Brownlee

DIRECTORS

Revathi Advaiti, Eaton Corporation
Robert O. Agbede, Chester Engineers, Inc.
Esther L. Barazzone, Chatham University
John A. Barbour, Buchanan Ingersoll & Rooney PC
Flemming B. Bjoernslev, LANXESS Corporation
Jeff Broadhurst, Eat'n Park Hospitality Group, Inc.
Julie Caponi, Alcoa Inc.
Carlos M. Cardoso, Kennametal Inc.
Helen Hanna Casey, Howard Hanna Real Estate Services
Randall S. Dearth, Calgon Carbon Corporation
Nicholas J. Deluliis, CONSOL Energy, Inc.
William S. Demchak, The PNC Financial Services Group, Inc.
J. Christopher Donahue, Federated Investors, Inc.
Charles J. Dougherty, Duquesne University
Laura E. Ellsworth, Jones Day
John J. Engel, WESCO International, Inc.
Mark Evans, Confluence
Michele Fabrizi, MARC USA
Karen Wolk Feinstein, Jewish Healthcare Foundation
Daniel K. Fitzpatrick, Citizens Bank of PA / NY / NJ / DE
Kimberly Tillotson Fleming, Hefren-Tillotson, Inc.
Michael D. Flowers, American Bridge Company
Dawn Fuchs, The Weavertown Environmental Group

Patrick D. Gallagher, University of Pittsburgh
William P. Getty, Claude Worthington Benedum Foundation
Steven J. Guy, Oxford Development Company
Charles L. Hammel, III, PITT OHIO
Richard J. Harshman, Allegheny Technologies Incorporated
Nigel Hearne, Chevron
Dawne S. Hickton, RTI International Metals, Inc.
David L. Holmberg, Highmark Health
Scott D. Izzo, Richard King Mellon Foundation
Peter J. Kalis, K&L Gates LLP
Laura Karet, Giant Eagle, Inc.
Mark R. Kempic, Columbia Gas of Pennsylvania, Inc.
James H. Lash, FirstEnergy Corporation
Mario Longhi, United States Steel Corporation
Gerald F. MacCleary, Bayer Material Science LLC
Henry J. Maier, FedEx Ground
David J. Malone, Gateway Financial Group, Inc.
Todd C. Moules, First Niagara Bank
Albert J. Neupaver, Wabtec
Morgan K. O'Brien, Peoples Natural Gas
Robert P. Oeler, Dollar Bank, FSB
Grant Oliphant, The Heinz Endowments
David L. Porges, EQT Corporation
Richard Riazzi, Duquesne Light Company
Daniel L. Roderick, Westinghouse Electric Company

Jeffrey A. Romoff, UPMC
John T. Ryan, III, MSA Safety, Inc.
Vincent V. Sands, BNY Mellon
Venkee Sharma, Aquatech International Corporation
Susan Baker Shipley, The Huntington National Bank
George L. Stewart, II, Reed Smith LLP
William E. Strickland, Jr., Manchester Bidwell Corporation
Subra Suresh, Carnegie Mellon University
Walter W. Turner, Koppers, Inc.
Sunil Wadhwani, iGate Corporation
Lara Washington, AHRCO

EX OFFICIO VOTING MEMBERS

Charles E. Bunch, PPG Industries, Inc.
Dennis Yablonsky, Allegheny Conference on Community Development

MEMBERS EMERITI

Douglas D. Danforth
Henry L. Hillman
James E. Lee
Martin G. McGuinn
Thomas H. O'Brien
C.J. Queenan, Jr.
James E. Rohr
Vincent A. Sarni
Richard P. Simmons
John P. Surma

GREATER PITTSBURGH CHAMBER OF COMMERCE

2014 Board of Directors

OFFICERS

CHAIR Richard J. Harshman	CHIEF EXECUTIVE OFFICER Dennis Yablonsky
VICE CHAIR Sue Schick	PRESIDENT Dewitt M. Peart
SECRETARY/TREASURER Daniel S. Wilson	

DIRECTORS

K. Scott Baker, UPMC
David E. Barenfeld, Ellwood Group, Inc.
G. Andrew Bonnewell, Federated Investors, Inc.
Todd D. Brice, S&T Bank
William B. Carnahan, Verizon-Pennsylvania
J. Randolph Cheetham, CSX Transportation
Frank Coonelly, Pittsburgh Pirates
John R. Denny, Denny Civic Solutions
Mark DeRubeis, Premier Medical Associates
Shawn Fox, Oxford Development Company
Kevin Garber, Babst Calland
Troy Harris, The Weavertown Environmental Group

Richard J. Harshman, Allegheny Technologies, Inc.
Donna Hudson, BNY Mellon
Tommy Johnson, CONSOL Energy, Inc.
Renee Jones, Chevron Corporation
Thomas F. Lamb, Jr., The PNC Financial Services Group, Inc.
Deborah P. Lippert, Pennsylvania American Water
Christopher J. Masciantonio, United States Steel Corporation
Terrence J. Murphy, K&L Gates LLP
Morgan K. O'Brien, Peoples Natural Gas
Daniel Onorato, Highmark Inc.
Eugene J. O'Sullivan, Elliott Group
Gabe Pellathy, PPG Industries
William Roland, Peoples Natural Gas
Arthur J. Rooney, II, Pittsburgh Steelers

Sue Schick, UnitedHealthcare
David Spigelmyer, Marcellus Shale Coalition
Edward W. Stack, Dicks Sporting Goods
Brian N. Turk, Alpha Natural Resources
Dennis Unkovic, Meyer Unkovic & Scott LLP
Tim White, Pennsylvania TRANE
Daniel S. Wilson, Eat'n Park Hospitality Group, Inc.
Erica Clayton Wright, Kennametal Inc.
Susan Zemba, Alcoa Inc.

EX OFFICIO VOTING MEMBERS

Morgan K. O'Brien, Peoples Natural Gas
Dennis Yablonsky, Allegheny Conference on Community Development

PENNSYLVANIA ECONOMY LEAGUE OF GREATER PITTSBURGH

2014 Board of Directors

OFFICERS

CHAIR Laura E. Ellsworth
VICE CHAIR Paul Hennigan
VICE CHAIR Diane P. Holder

SECRETARY/TREASURER Robert A. Krizner
PAST CHAIR Thomas L. VanKirk
CHIEF EXECUTIVE OFFICER Dennis Yablonsky

DIRECTORS

Patricia E. Beeson, University of Pittsburgh
Daniel A. Brailer, WESCO International, Inc.
Quintin B. Bullock, Community College of Allegheny County
Matthew F. Burger, Buchanan Ingersoll & Rooney PC
Ray Carter, WPXI-TV
Jere L. Cowden, Cowden Associates, Inc.
Ronald Davenport, Jr., Sheridan Broadcasting Corporation
Deno De Ciantis, Ed.D., The Penn State Center
Vincent J. Delie, First National Bank of Pennsylvania
Gregory G. Dell'Omo, PhD, Robert Morris University
John R. Denny, Denny Civic Solutions
Robert C. Denove, Deloitte LLP
David H. Ehrenwerth, K&L Gates LLP
Laura E. Ellsworth, Jones Day
Richard W. Epstein, Ekker, Kuster, McConnell & Epstein, LLP
Robert Fragasso, Fragasso Financial Advisors
Eric Hanson, PhD, Development Dimensions International, Inc.
Tori Haring-Smith, PhD, Washington & Jefferson College
Brian Heery, Mitsubishi Electric Power Products, Inc.
Paul Hennigan, PhD, Point Park University

Stuart G. Hoffman, PhD, The PNC Financial Services Group, Inc.
Diane P. Holder, UPMC Health Plan
Daniel R. Holtz, Highmark Inc.
Lynette A. Horrell, Ernst & Young LLP
Julie Fallon Hughes, Fifth Third Bank
Timothy M. Inglis, Colcom Foundation
Robert W. Kampmeier, RWK Investments, LLC
Robert A. Krizner, KPMG LLP
Jay Kruisselbrink, Airmall Pittsburgh
Jeffrey W. Letwin, Schnader Harrison Segal & Lewis, LLP
Bradley P. Lusk, Sisterson & Co. LLP
Joseph A. Massaro, III, Massaro Corporation
Robert W. McCutcheon, PricewaterhouseCoopers LLP
Kathleen M. McKenzie, Allegheny Health Network
J. Kevin McMahon, The Pittsburgh Cultural Trust
Stacy McMahan, MSA Safety, Inc.
John P. Meegan, Hefren-Tillotson, Inc.
Suzanne Mellon, Carlow University
Joseph Milicia, Jr., Turner Construction Company
James H. Mullen, Jr., Allegheny College
Robert P. Nadin, Braskem America
Cheryl Norton, PhD, Slippery Rock University

Trip Oliver, Chevron
Ruthann L. Omer, P.E., The Gateway Engineers, Inc.
Steven C. Price, Solenture, Inc.
George Robinson, II, Black & Veatch Water
K. Scott Roy, Range Resources Corporation
Richard Russell, Giant Eagle, Inc.
S. Murray Rust, III, Montgomery & Rust, Inc.
Timothy Ryan, Eckert Seamans Cherin & Mellott, LLC
A. William Schenck, III, TriState Capital Bank
Kevin Snider, Penn State New Kensington
Samuel J. Stephenson, Baker Tilly Virchow Krause LLP
Richard I. Thomas, Pepper Hamilton LLP
Dennis Unkovic, Meyer, Unkovic & Scott LLP
Guhan Venkatu, Federal Reserve Bank of Cleveland, Pittsburgh Branch
Winthrop Watson, Federal Home Loan Bank of Pittsburgh

EX OFFICIO VOTING MEMBERS

Thomas L. VanKirk, Immediate Past Chair
Dennis Yablonsky, Allegheny Conference on Community Development

PITTSBURGH REGIONAL ALLIANCE

2014 Regional Partnership

OFFICERS

CHAIR David J. Malone
CHIEF EXECUTIVE OFFICER Dennis Yablonsky

TREASURER/SECRETARY Samuel J. Stephenson
PRESIDENT Dewitt M. Peart

MEMBERS

Jeffrey Ackerman, CBRE *
Al Ambrosini, Fayette County Board of Commissioners
Scott Barnyak, SDLC Partners, L.P.
David K. Battaglia, Armstrong County Board of Commissioners
Jeff Burd, Builders Guild of Western Pennsylvania, Inc. *
Kirk B. Burkley, Bernstein-Burkley *
Donald F. Chappel, Greene County Industrial Developments, Inc.
Michael P. Coonley, AICP, Armstrong County Department of Economic Development *
R. Tyler Courtney, Westmoreland County Board of Commissioners
Dennis Davin, Allegheny County Economic Development *
Craig T. Davis, VisitPittsburgh
Jeffrey Deane, CPA, BKD, LLP *
Robert Del Signore, Lawrence County Board of Commissioners
Thomas G. Donahue, Dinsmore & Shohl LLP
Domenic Dozzi, JENDOCO Construction and Real Estate *
Jeffrey A. Elser, FirstEnergy Corporation
Rich Fitzgerald, County Executive, Allegheny County *
William Randell Forister, Allegheny County Airport Authority *
Dr. Karl A. Harris, Penn State Electro-Optics Center

Dr. James R. Hassinger, Southwestern Pennsylvania Commission
J. Florian Kluge, Draeger Safety, Inc.
Jeff M. Kotula, Washington County Chamber of Commerce
Mark Latterner, Citizens Bank of PA / NY / NJ / DE
Richard Lunak, Innovation Works
Lawrence Maggi, Washington County Board of Commissioners
David J. Malone, Gateway Financial Group, Inc. *
John Manzetti, Pittsburgh Life Sciences Greenhouse
John C. Mascaro, Jr., Mascaro Construction Company, L.P.
Michael Matesic, Idea Foundry
Robbie M. Matesic, Greene County, Department of Economic Development
William L. McCarrier, Butler County Board of Commissioners
Justin McElhattan, Industrial Scientific Corporation
Petra Mitchell, Catalyst Connection *
Dennis Nichols, Beaver County Board of Commissioners
Linda Nitch, Lawrence County Economic Development Corporation
James Palmer, Beaver County Corporation for Economic Development
William Peduto, Mayor, City of Pittsburgh
Gregory P. Quatchak, P.E., NAIOP *

Ken Raybuck, Community Development Corporation of Butler County
Jason Rigone, Westmoreland County Industrial Development Corporation
Clifford R. Rowe, PJ Dick, Incorporated
Robert Rubinstein, Urban Redevelopment Authority of Pittsburgh
Rodney Ruddock, Indiana County Board of Commissioners
David B. Ruppertsberger, Joint ED Initiatives, University of Pittsburgh & Carnegie Mellon University
Audrey Russo, Pittsburgh Technology Council *
Bob Shark, Fay-Penn Economic Development Council
Dr. Donald F. Smith, Jr., Regional Industrial Development Corporation *
Byron G. Stauffer, Jr., Indiana County Office of Planning & Development
Samuel J. Stephenson, Baker Tilly Virchow Krause LLP
Stanford B. Zimmerman, Greene County Board of Commissioners
Charlotte Zuschlag, ESB Bank

EX OFFICIO VOTING MEMBERS

Dennis Yablonsky, Allegheny Conference on Community Development *

** Steering Committee*

ALLEGHENY CONFERENCE REGIONAL INVESTORS COUNCIL

#1 Cochran Inc. 113 Industries 90.5 WESA AAA East Central About Pittsburgh, Inc. Acusis LLC Aetna AHRCO Airmall Pittsburgh Alcoa Foundation Alcoa Inc. Allegheny College Allegheny County Airport Authority Allegheny Health Network Allegheny Technologies Incorporated Alpha Natural Resources AMCOM Office Systems American Bridge Company American Eagle Outfitters, Inc. American Textile Company Ansaldo STS USA, Inc. Aquatech International Corporation Arch Street Management, LLC ASKO, Inc. Astorino AXA Advisors, LLC Babst, Calland, Clements & Zomnir, P.C. Bank of America/Merrill Lynch Baker Tilly Virchow Krause LLP Bayer MaterialScience LLC BDO USA, LLP Beaver County Chamber of Commerce Bernstein-Burkley BKD, LLP BNY Mellon Bombardier Transportation Boyden Braskem America Bravo Group Buchanan Ingersoll & Rooney PC Buchart Horn, Inc.	Burns & Scalo Real Estate Services Inc. Cabot Oil & Gas Corporation Calgon Carbon Corporation Callay Capital LLC Campos Inc. Canonsburg General Hospital Carey Group Carlow University Carmeuse Lime & Stone Carnegie Library of Pittsburgh Carnegie Mellon University Catalyst Connection CBRE Cellone's Bakery, Inc. Chaska Property Advisors, Inc. Chatham University Chester Engineers, Inc. Chevron Children's Hospital of Pittsburgh of UPMC Citizens Bank of PA / NY / NJ / DE City of Hermitage Civil & Environmental Consultants, Inc. Claude Worthington Benedum Foundation Clear Intentions International Cohen & Grigsby, P.C. Colcom Foundation Colliers International Columbia Gas of Pennsylvania, Inc. Comcast Spotlight Community College of Allegheny County Compunetix, Inc. Concurrent Technologies Corporation Confluence CONSOL Energy, Inc. Constructors Association of Western Pennsylvania Cowden Associates, Inc. Crown Castle CSX Transportation Dawood Engineering, Inc.	Deloitte LLP Denny Civic Solutions Development Dimensions International, Inc. Dickie McCamey & Chilcote, P.C. Dicks Sporting Goods Dinsmore & Shohl LLP DLA+ Architecture & Interior Design Dollar Bank, FSB Dominion Draeger Safety, Inc. Duane Morris LLP Duquesne Club Duquesne Light Company Duquesne University Eastern Minority Supplier Development Council Eastman Chemical Resins, Inc. Eat'n Park Hospitality Group, Inc. Eaton Corporation Eckert Seamans Cherin & Mellott, LLC Education Management Corporation (EDMC) Ekker, Kuster, McConnell & Epstein, LLP Elliott Group Ellwood Group, Inc. Emerson Process Management Power and Water Enterprise Bank EQT Corporation Ernst & Young LLP ESB Bank EverPower Wind Holdings, Inc. Fabled Table Fay-Penn Economic Development Council FCG Solutions, Inc. Federal Home Loan Bank of Pittsburgh Federal Reserve Bank of Cleveland, Pittsburgh Branch	Federated Investors, Inc. FedEx Ground Fifth Third Bank First Commonwealth Bank First National Bank of Pennsylvania First Niagara Bank FirstEnergy Corporation Forbes Funds Fox Rothschild LLP Fragasso Financial Advisors Gatesman+Dave, Inc. Gateway Financial Group, Inc. Gateway Health Plan Gateway Rehabilitation Center Geneva College Giant Eagle, Inc. Google Pittsburgh Grant Street Associates, Inc. Greater Pittsburgh Arts Council Green Building Alliance Gunning, Inc. H. J. Heinz Company Havas PR HDR, Inc. Hefren-Tillotson, Inc. Henderson Brothers Heritage Valley Health System Heyl & Patterson, Inc. Highmark Health Highmark Inc. Hospital Council of Western Pennsylvania Housetrends Magazine of Pittsburgh Howard Hanna Real Estate Services iGate Corporation Imperial Land Corporation Indiana Regional Medical Center Indiana University of Pennsylvania Industrial Scientific Corporation Infrastructure and Industrial Constructors USA (i+iconUSA)
--	--	--	---

ALLEGHENY CONFERENCE REGIONAL INVESTORS COUNCIL

International Paper	PJ Dick Incorporated	RJG Translations	The Weavertown
Iron Mountain	PEAK Technical Staffing USA	Robert Morris University	Environmental Group
JENDOCO Construction and Real Estate	Penn State Beaver	Rosedale Technical Institute	The Webb Law Firm
Jennmar Corporation Jewish Healthcare Foundation	Penn State Fayette	RTI International Metals, Inc.	TiER1 Performance Solutions
Jones Day	Penn State Greater Allegheny	Russell Standard Corporation	TriState Capital Bank
Jones Lang LaSalle Pittsburgh	Penn State New Kensington	RWK Investments, LLC	Turner Construction Company
Joseph B. Fay Company	Pennoni Associates Inc.	S&T Bank	United States Steel Corporation
JP Morgan Chase Bank, N.A.	Pennsylvania American Water	Schnader Harrison Segal & Lewis, LLP	UnitedHealthcare
K&L Gates LLP	Pennsylvania Coal Alliance	Schneider Downs	University of Pittsburgh
Kennametal Inc.	Peoples Natural Gas	SDLC Partners, LP	UPMC
Koppers, Inc.	Pepper Hamilton LLP	Seneca Resources Corporation	UPMC Health Plan
KPMG LLP	PGT Trucking, Inc.	Seton Hill University	UPS
L. B. Foster Company	Phipps Conservatory and Botanical Gardens, Inc.	Shell Exploration & Production Company	URS Corporation
La Roche College	Pipitone Group	Sheridan Broadcasting Corporation	US Airways
Lamar Advertising Company - Pittsburgh	PITT OHIO	Sisterson & Co. LLP	Value Ambridge Properties, Inc.
LANXESS Corporation	Pittsburgh Business Times	Slippery Rock University	Veolia Water Solutions & Technologies North America, Inc.
Magee-Womens Hospital of UPMC	Pittsburgh Career Institute	Snively Forest Products	Verizon – Pennsylvania
Manchester Bidwell Corporation	PITTSBURGH Magazine	Snodgrass Industries	VisitPittsburgh
MARC USA	Pittsburgh Parks Conservancy	Solenture, Inc.	Wabtec Corporation
Marcellus Shale Coalition	Pittsburgh Penguins	Somerset Trust Company	Washington & Jefferson College
Mascaro Construction Company, L.P.	Pittsburgh Pirates	Stantec	Wells Fargo Insurance Services USA, Inc.
Massaro Corporation	Pittsburgh Post-Gazette	Summa Technologies, Inc.	WESCO International, Inc.
Master Builders' Association of Western Pennsylvania, Inc.	Pittsburgh Quarterly	The Art Institute of Pittsburgh	Westin Convention Center Pittsburgh
McCune Foundation	Pittsburgh Steelers	The Benter Foundation	Westinghouse Electric Company
McGuire Woods LLP	Pittsburgh Symphony Orchestra	The Buhl Foundation	Westmoreland County Community College
McKamish Inc.	Pittsburgh Technical Institute	The Buncher Company	Wetzel Consulting
Meyer, Unkovic & Scott LLP	Pittsburgh Technology Council	The Elmhurst Group	Whirl Magazine
Michael Baker Corporation	Pittsburgh Transportation Group	The Gateway Engineers, Inc.	Williams
MSA Safety, Inc.	Pittsburgh Venture Capital Association	The Hawthorne Group	Willis
Mitsubishi Electric Power Products, Inc.	Plus Consulting, LLC	The HDH Group, Inc.	WordWrite Communications LLC
Montgomery & Rust, Inc.	PMI	The Heinz Endowments	WPX Energy, Inc.
Morgan, Lewis & Bockius LLP	Point Park University	The Hillman Company	WPXI-TV
Mt. Lebanon Office Equipment Co., Inc.	Pop City Media	The Hillman Foundation, Inc.	WQED Multimedia
Nemacolin Woodlands Resort	PPG Industries, Inc.	The Huntington National Bank	WTAE-TV/Channel 4
Newmark Grubb Knight Frank	Premier Medical Associates	The Lane Construction Corporation	YMCA of Greater Pittsburgh
NEXTpittsburgh	PricewaterhouseCoopers LLP	The Penn State Center - Pittsburgh	
NOVA Chemicals Corporation	Range Resources Corporation	The Pittsburgh Cultural Trust	
Oxford Development Company	Reed Smith LLP	The Pittsburgh Foundation	
	Ref-Chem L.P.	The Pittsburgh Promise	
	Regional Learning Alliance	The PNC Financial Services Group, Inc.	
	Richard King Mellon Foundation		



Follow us on social media:
AlleghenyConference.org/SocialMedia.php



Allegheny Conference
on Community Development

11 STANWIX STREET, 17th FLOOR | PITTSBURGH, PA 15222-1312

TOLL FREE: 1 (877) 392-1300 | **PHONE:** (OUTSIDE OF U.S. AND CANADA) +1 (412) 281-1890 | **FAX:** (412) 471-2554
AlleghenyConference.org