

Response + Recovery

The Allegheny Conference
COVID-19 Webinar Series

TODAY:

**“Getting Ahead of
Childcare Challenges as
Your Workforce Returns”**



UPMC HEALTH PLAN

Program

- Welcome
- Presentation
- Q&A Session
- Wrap-Up

Welcome:

Sara Gaal

Senior Director, Investor Relations, Allegheny
Conference on Community Development

Presenters:

Caitlin McLaughlin

EVP - Director of Talent, The PNC Financial Services
Group, Inc.

Cara Ciminillo

Executive Director, Trying Together

Christine Smith

Eligibility Supervisor, Early Learning Resource Center,
Region 4

Stephanie Lewis

Director, Allegheny Partners for Out of School Time,
United Way of Southwestern PA

Sara Gaal

Senior Director, Investor Relations,
Allegheny Conference on
Community Development

Caitlin McLaughlin

EVP – Director of Talent
The PNC Financial Services Group, Inc.

Cara Ciminillo

Executive Director
Trying Together

Stephanie Lewis

Director, Allegheny Partners for Out of
School Time, United Way of
Southwestern PA

Christine Smith

Eligibility Supervisor, Early Learning
Resource Center, Region 4 – serving
Fayette, Greene, Washington &
Westmoreland counties

How to Choose, Find, and Fund Child Care

Cara Ciminillo, executive director, Trying Together,
cara@tryingtogether.org

Stephanie Lewis, director of Allegheny Partners for
Out of School Time (APOST),
Stephanie.Lewis@unitedwayswpa.org

Christine Smith, Eligibility Supervisor, Early
Learning Resource Center (ELRC) Region 4,
CSmith@elrc4kids.com





Trying
together

Mission

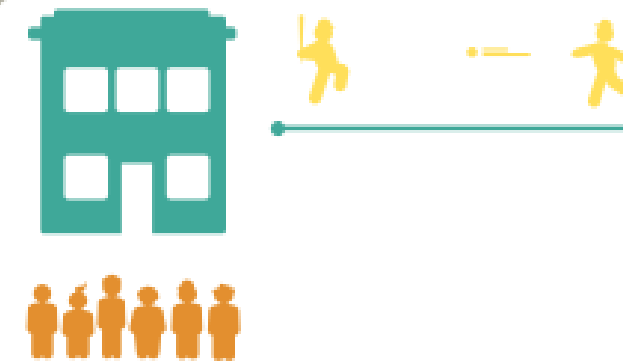
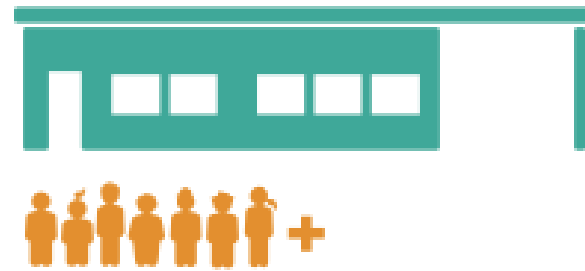
Trying Together supports high-quality care and education for young children by providing advocacy, community resources, and professional growth opportunities for the needs and rights of children, their families, and the individuals who interact with them. Trying Together works regionally (in Southwestern Pennsylvania) and takes its expertise and models to statewide and national audiences.



BIRTH TO KINDERGARTEN FUNDING

CHILD CARE CENTER

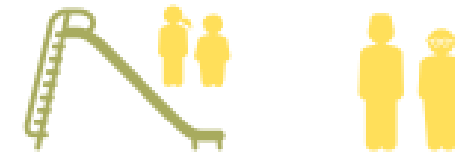
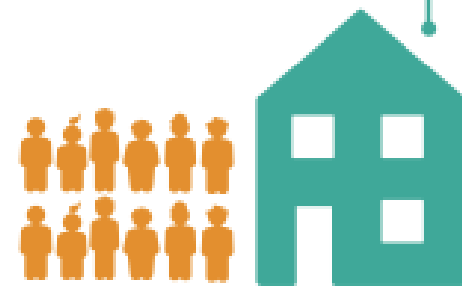
Care and education provided in a center to more than seven children.

**FAMILY CHILD CARE HOME**

One caregiver that provides care and education in a home setting for three to six children not related to the caregiver.

GROUP CHILD CARE HOME

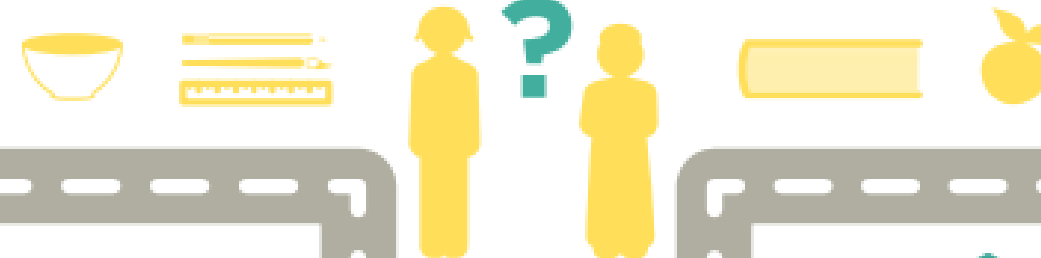
Care and education provided in a home setting for up to twelve children.

**FAMILY, FRIEND, AND NEIGHBOR CARE**

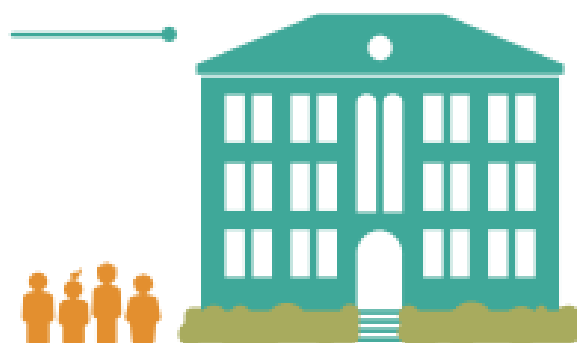
One caregiver that provides care and education in a home setting for no more than three unrelated children.



WHAT DOES
**EARLY CHILDHOOD
EDUCATION AND CARE**
LOOK LIKE IN YOUR NEIGHBORHOOD

**PUBLIC SCHOOL**

A school that provides pre-kindergarten programming (may be funded privately or publicly).

**PRIVATE SCHOOL**

A school that provides pre-kindergarten programming (funded by the individual family or school).

PUBLICLY FUNDED SUPPORTS

What does high-quality child care look like?

- Caring, responsive, interactions between caregivers and children
- Communicates with child with warm, supportive voice--through talk, touch, song, and stories
- Play-based curriculum
- Family engagement that includes open door policy, regular updates re: child's day.
- Star 3 or 4, or NAEYC Accredited

United Way of SWPA Allegheny Partners for Out of School Time (APOST)



Partnership dedicated to building a quality Out-of-School Time (OST) System that will contribute to the healthy successful development of young people.

APOST¹⁰
RAISING THE POWER OF
OUT-OF-SCHOOL TIME OVER TEN YEARS



Markers of Quality

- **Positive relationships** among youth and staff
- Activities that **develop skills, promote learning,** and foster **positive youth development**
- Varied content and learning strategies that combine academic, recreational, and cultural elements
- **Safety and accessible** environment
- **Clean & well-maintained** facilities
- Promotes **fitness, good nutrition,** and healthy choices

Finding Child Care, After-School, and Summer Care



AlleghenyChildCare.org

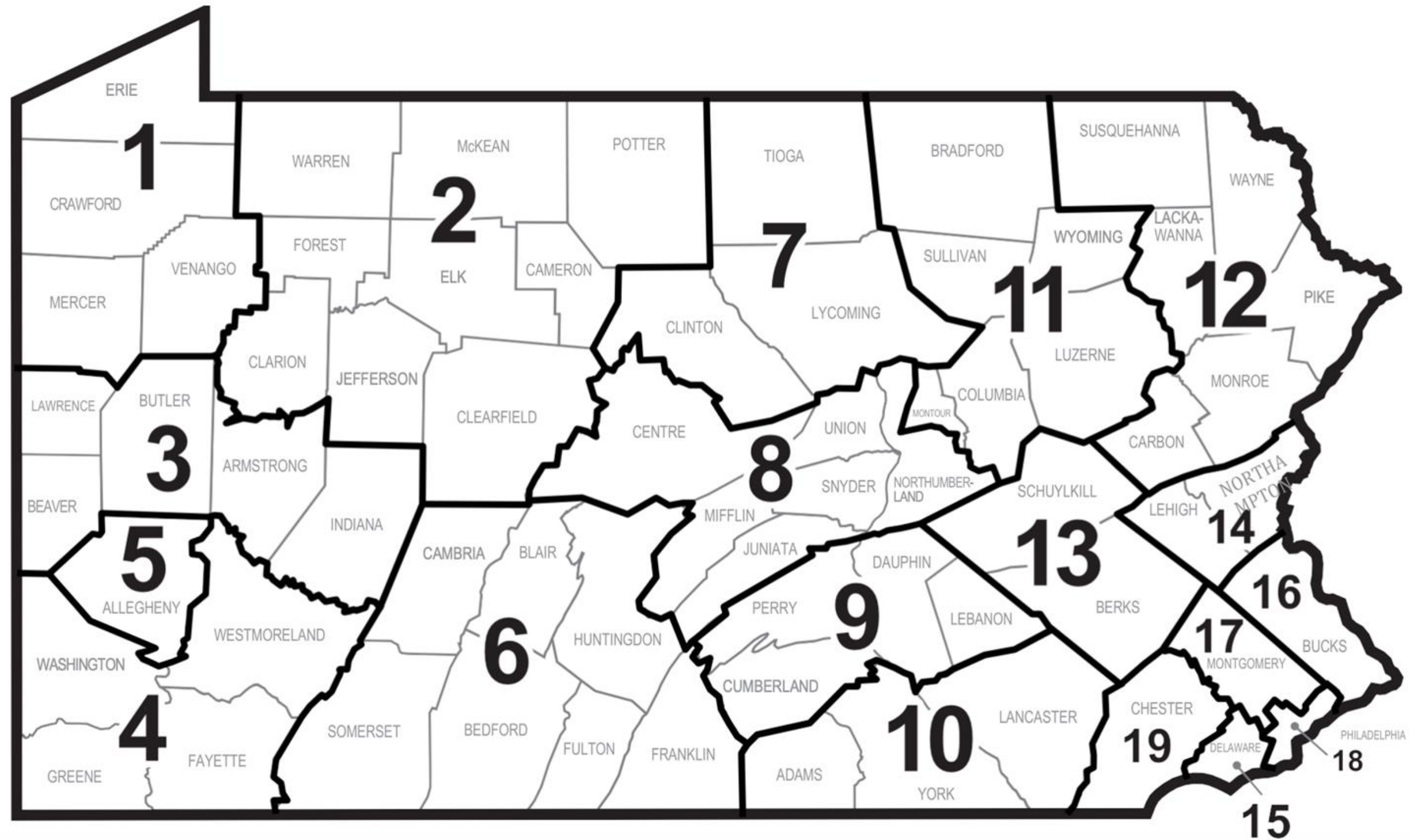
- New digital tool, powered by BridgeCare
- Real-time openings and vacancies
- Full day, after school, and summer

Compass

- www.findchildcare.pa.gov
- PA's online provider search tool



Early Learning Resource Center, Region 4, Fayette, Greene, Washington, Westmoreland County



Funding Child Care, After-School, and Summer Care



How does a family qualify for the child care subsidy?

- Working 20+ hours or more
- Under 200% of poverty
- Complete Application via:
 - Online at:
<https://www.compass.state.pa.us/compass.web/Public/CMPHome>
 - Call 1-800-548-2741 to get an application mailed or emailed to you
 - visit www.ELRC4Kids.com
- Report income and verify employment to the ELRC

If a family is receiving cash assistance through the County Assistance Office, they will need to check their eligibility for child care subsidy from their CAO caseworker

You found a high-quality child care program and are ready to enroll your child, but **how do you pay for it? Do you qualify for publicly-funded programs?** Learn more about qualifying for subsidy and supplemental payment programs available for families below.

Pre-K Counts

300% of federal poverty guidelines
School-day, school-year program for children ages three and four: may give preference to four year olds

Child Care Works

200% of federal poverty guidelines
Children ages birth to 12 may receive a voucher to attend a child care program based on family or household’s school or work schedule; a small co-pay is required from the family

Head Start

100% of federal poverty guidelines
School-day, school-year program for children ages three and four; may give preference to four year olds

Early Head Start

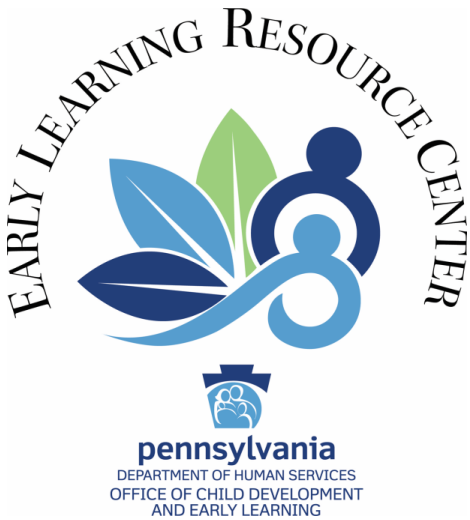
100% of federal poverty guidelines
Early Head Start serves children birth to age two in home-based or center-based programs; most programs are not full-time care

Federal Poverty Guidelines 2020

PERSONS IN HOUSEHOLD*	100%	200%	300%
1	\$12,760	\$25,520	\$38,280
2	\$17,240	\$34,480	\$51,720
3	\$21,720	\$43,440	\$65,160
4	\$26,200	\$52,400	\$78,600
5	\$30,680	\$61,360	\$92,040
6	\$35,160	\$70,320	\$105,480
7	\$39,640	\$79,280	\$118,920
8	\$44,120	\$88,240	\$132,360

** Add \$4,480 for each additional person in families/households with more than eight persons.*

Even if you do not qualify at the levels listed above, many programs offer their own independent scholarships or tuition assistance programs. Ask each program you are considering about financial assistance.



Early Learning Resource Center, Region 4, Fayette, Greene, Washington, Westmoreland County

Office

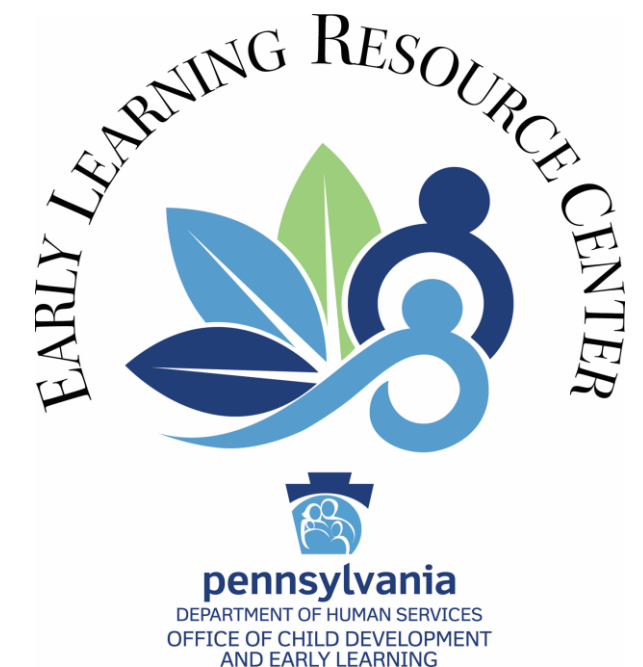
4893 State Route 30, Suite 1
Greensburg, PA 15601

Phone 1-800-548-2741

Fax 724.836.5415

Email

ELRCRegion4@pa.gov



Early Learning Resource Center, Region 5, Allegheny County

Downtown office

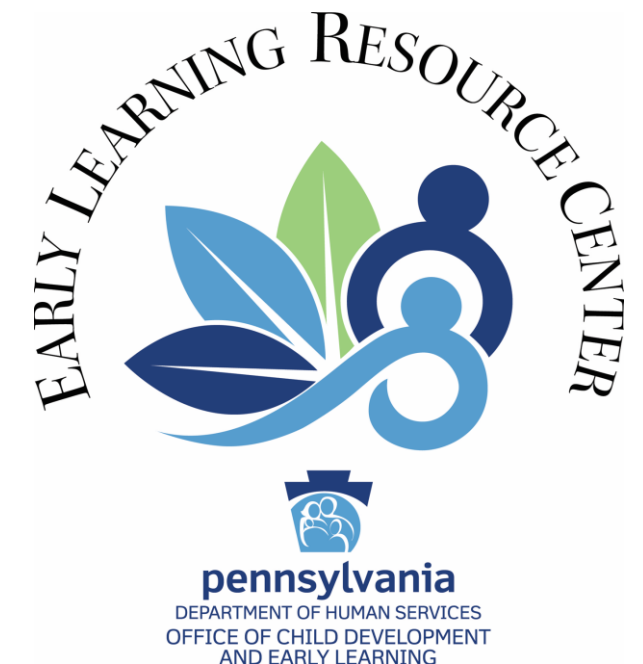
304 Wood Street, Suite 400
Pittsburgh, PA 15222-1928

Phone 412.350.3577

Fax 412.350.3575

Email

elrc5@alleghenycounty.us



What's happening given COVID?

- Child Care- 25-50% of capacity in order to follow CDC recommendations of physical distancing
- Out of School Time/Summer Care
- Programs follow health & safety guidance from the CDC
- [Family checklist of questions](#) to ask re: COVID

Child Care & Summer Camp providers should:

- Require all staff to wear face masks/coverings. Children over 2 are also required to wear masks.
- Frequent hand washing.
- Intensify cleaning, disinfection and ventilation of facilities, materials and toys.
- Maintain state required staff-to-child ratios, reduce the mixing of groups, and space out children at naptime to six feet apart if possible.
- When possible, same early educators stay with same group of children from day-to-day.
- Require staff and children to be screened for illness—people with a temperature greater than 99.5 degrees should stay home or be sent home.
- Stagger drop off and pick up, if possible.
- Not allow outside visitors and volunteers into the facility.

Other ways to be supportive:

- Recognize that *how* work gets done may have to look a little different
- Flexible work hours when possible
- Ample warning before changes in schedule
- Ask for employee input about what they need to do their best work while being good parents
- Opportunity to be a part of the myriad of solutions--Think OUT of the BOX!
 - help facilitate parent-driven solutions
 - partner with care providers
- Amplify the need for a well-supported care infrastructure for our economy

Thank you!

Cara Ciminillo, executive director, Trying Together,
cara@tryingtogether.org

Stephanie Lewis, director of Allegheny Partners for
Out of School Time (APOST),
Stephanie.Lewis@unitedwayswpa.org

Christine Smith, Eligibility Supervisor, Early
Learning Resource Center (ELRC) Region 4,
CSmith@elrc4kids.com



Q & A

Moderated by:

Becky Thatcher Baer

Director, Community Development
Allegheny Conference on
Community Development

Response + Recovery

The Allegheny Conference
COVID-19 Webinar Series

TODAY:

**“Getting Ahead of
Childcare Challenges as
Your Workforce Returns”**



UPMC HEALTH PLAN

A wide-angle photograph of the Pittsburgh skyline at dusk. The city's skyscrapers, including the PPG Place and the US Steel Tower, are illuminated and their lights reflect in the calm water of the Allegheny River. The iconic yellow suspension bridge, the Roberto Clementi Bridge, spans the river on the right side of the frame. The sky is a mix of soft pinks, oranges, and blues, indicating the time is either early morning or late evening. Overlaid on the center of the image is the title text in a large, white, bold, sans-serif font.

PITTSBURGH REGION RESPONSE TO COVID-19

AlleghenyConference.org/COVID-19

A panoramic view of the Pittsburgh skyline at dusk. The city's dense urban landscape is visible, with numerous skyscrapers and buildings illuminated by the low light of the evening. The sky is a deep blue with scattered white clouds. In the foreground, the city's residential areas are visible, with houses and trees showing some autumnal colors. The overall atmosphere is one of a bustling city preparing for the night.

**The Pittsburgh region
is getting ready to
reopen responsibly.**

Visit readypittsburgh.com for a curated toolbox
of resources to help businesses & organizations
safely return to work.

Thank you for participating.

Stay tuned for upcoming programs in the Allegheny Conference's Response + Recovery Webinar Series ...

and find an archive of our webinars and related materials at the region's COVID-19 Response site:

AlleghenyConference.org/COVID-19